



Greater Las Vegas Association of REALTORS® January 2019 Statistics

	Single Family Residential Units			Condo/Townhouse Units		
	Jan 19	Change from Dec 18	Change from Jan 18	Jan 19	Change from Dec 18	Change from Jan 18
AVAILABILITY AT END OF PERIOD						
# of available units listed	10,551	+11.6%	+34.7%	2,522	+14.0%	+56.5%
Median list price of available units	\$ 325,000	-1.2%	+4.8%	168,000	-0.6%	+12.0%
Average list price of available units	\$ 472,409	-1.7%	-1.1%	187,902	-0.9%	+3.7%
*AVAILABILITY AT END OF PERIOD						
# of available units listed w/o offers	7,254	+9.7%	+95.1%	1,703	+11.5%	+168.6%
Median list price of available units w/o offers	\$ 338,000	-0.6%	-7.4%	\$ 168,000	-0.6%	+1.8%
Average list price of available units w/o offers	\$ 519,488	-2.2%	-16.2%	\$ 189,375	-0.6%	-8.5%
NEW LISTINGS THIS PERIOD						
# of new listings	3,805	+62.9%	+22.7%	979	+63.2%	+23.1%
Median price of new listings	\$ 315,000	+1.6%	+8.6%	\$ 174,900	-0.1%	+14.3%
Average price of new listings	\$ 412,307	+4.5%	+8.1%	\$ 189,181	+1.4%	+5.8%
UNITS SOLD THIS PERIOD						
# of units sold	1,823	-14.9%	-19.4%	482	-6.6%	-12.5%
Median price of units sold	\$ 300,000	+1.6%	+13.2%	\$ 170,000	+4.0%	+13.4%
Average price of units sold	\$ 351,432	+1.9%	+14.0%	\$ 184,208	+4.2%	+16.2%
TIME ON MARKET FOR UNITS SOLD THIS PERIOD						
	Jan 19	Dec 18	Jan 18	Jan 19	Dec 18	Jan 18
0-30 days	48.3%	55.3%	58.6%	47.5%	53.7%	65.5%
31-60 days	23.7%	24.6%	18.2%	23.7%	24.6%	17.6%
61-90 days	14.6%	9.9%	10.4%	14.1%	13.0%	8.0%
91-120 days	6.7%	5.1%	5.0%	7.9%	4.8%	4.0%
121+ days	6.6%	5.1%	7.8%	6.8%	3.9%	4.9%
TOTAL HOME SALES DOLLAR VALUE FOR UNITS SOLD THIS PERIOD						
	Jan 19	Change from Dec 18	Change from Jan 18	Jan 19	Change from Dec 18	Change from Jan 18
	\$ 640,661,376	-13.3%	-8.1%	\$ 88,788,135	-2.7%	+1.7%

***This category reflects the existing market availability of listings without pending or contingent offers.**

Source: Greater Las Vegas Association of REALTORS®

For media inquiries, please call George McCabe, with B&P Public Relations, at (702) 325-7358.

DISCLAIMER: This data is based on information from the Greater Las Vegas Association of REALTORS® (GLVAR) Multiple Listing Service (MLS). This information is deemed reliable but is not guaranteed. MLS collects, compiles and distributes information about homes listed for sale by its subscribers who are real estate agents. MLS subscription is available to all real estate agents licensed in Nevada, but is not available to the general public. Not all licensed agents subscribe to the MLS. MLS does not include all new homes available or listings from non-MLS agents, nor does it include properties for sale by owner. The territorial jurisdiction of the GLVAR as a member of the National Association of REALTORS® includes Clark, Nye, Lincoln and White Pine Counties, Nevada, and such other areas as from time to time may be allocated to the GLVAR by the Board of Directors of the National Association of REALTORS®.



Greater Las Vegas Association of REALTORS® January 2019 Statistics

Sold Units Statistics by Area (see map)

Area	Single Family Residential Units			Condo/Townhouse Units		
	# of units sold	Median Sold Price	Average Sold Price	# of units sold	Median Sold Price	Average Sold Price
101 - North	27	\$195,000	\$193,670	3	\$141,000	\$126,833
102 - North	99	\$312,999	\$356,495	8	\$194,000	\$204,125
103 - North	209	\$275,000	\$285,067	20	\$182,500	\$182,370
201 - East	32	\$176,000	\$173,591	2	\$89,000	\$89,000
202 - East	38	\$212,750	\$204,950	15	\$100,000	\$105,170
203 - East	37	\$247,900	\$272,135	16	\$137,195	\$134,564
204 - East	73	\$239,000	\$248,382	10	\$130,750	\$138,220
301 - South	41	\$245,000	\$257,883	33	\$170,000	\$163,203
302 - South	43	\$272,000	\$282,765	27	\$121,000	\$131,422
303 - South	90	\$294,950	\$347,867	22	\$205,500	\$205,114
401 - North West	12	\$225,950	\$233,482	6	\$100,500	\$95,667
402 - North West	53	\$250,000	\$250,034	25	\$130,000	\$122,812
403 - North West	40	\$294,500	\$326,231	42	\$158,750	\$158,981
404 - North West	89	\$400,000	\$518,793	22	\$274,250	\$293,923
405 - North West	154	\$321,750	\$363,207	19	\$177,000	\$186,316
501 - South West	29	\$349,900	\$356,683	21	\$155,000	\$156,478
502 - South West	70	\$385,750	\$489,794	26	\$166,500	\$209,206
503 - South West	92	\$360,000	\$402,223	54	\$165,000	\$199,489
504 - South West	90	\$292,500	\$322,238	10	\$166,600	\$179,310
505 - South West	94	\$350,000	\$389,611	3	\$232,500	\$250,833
601 - Henderson	29	\$295,000	\$382,148	12	\$176,250	\$193,492
602 - Henderson	62	\$334,167	\$376,430	31	\$229,900	\$216,213
603 - Henderson	28	\$380,591	\$449,703	13	\$280,000	\$272,806
604 - Henderson	32	\$287,000	\$304,628	2	\$186,450	\$186,450
605 - Henderson	60	\$309,750	\$354,052	10	\$138,750	\$163,150
606 - Henderson	132	\$396,200	\$526,845	24	\$214,500	\$268,017
701 - Boulder City	9	\$389,000	\$407,700	2	\$134,000	\$134,000
702 - Boulder City	2	\$372,500	\$372,500	2	\$267,500	\$267,500
800 - Mesquite	3	\$250,000	\$488,167	2	\$103,950	\$103,950
801 - Muddy River (Moapa, Glendale, Logandale, Overton)	3	\$375,000	\$375,000	-	\$0	\$0
802 - Mt. Charleston/Lee Canyon	4	\$411,250	\$405,125	-	\$0	\$0
803 - Indian Springs/Cold Creek	-	\$0	\$0	-	\$0	\$0
804 - Mountain Springs	-	\$0	\$0	-	\$0	\$0
805 - Blue Diamond	-	\$0	\$0	-	\$0	\$0
806 - State Line/Jean/Goodsprings	-	\$0	\$0	-	\$0	\$0
807 - Sandy Valley	1	\$229,000	\$229,000	-	\$0	\$0
808 - Laughlin	2	\$148,500	\$148,500	-	\$0	\$0
809 - Other Clark County	-	\$0	\$0	-	\$0	\$0
810 - Pahrump	37	\$243,000	\$247,044	-	\$0	\$0
811 - Nye County	1	\$40,000	\$40,000	-	\$0	\$0
812 - Lincoln County	1	\$101,000	\$101,000	-	\$0	\$0
813 - Other Nevada	1	\$17,900	\$17,900	-	\$0	\$0
814 - Amargosa Valley	-	\$0	\$0	-	\$0	\$0
815 - Beatty	-	\$0	\$0	-	\$0	\$0
816 - White Pine County	3	\$105,000	\$97,833	-	\$0	\$0
817 - Searchlight	-	\$0	\$0	-	\$0	\$0
900 - Outside Nevada	-	\$0	\$0	-	\$0	\$0

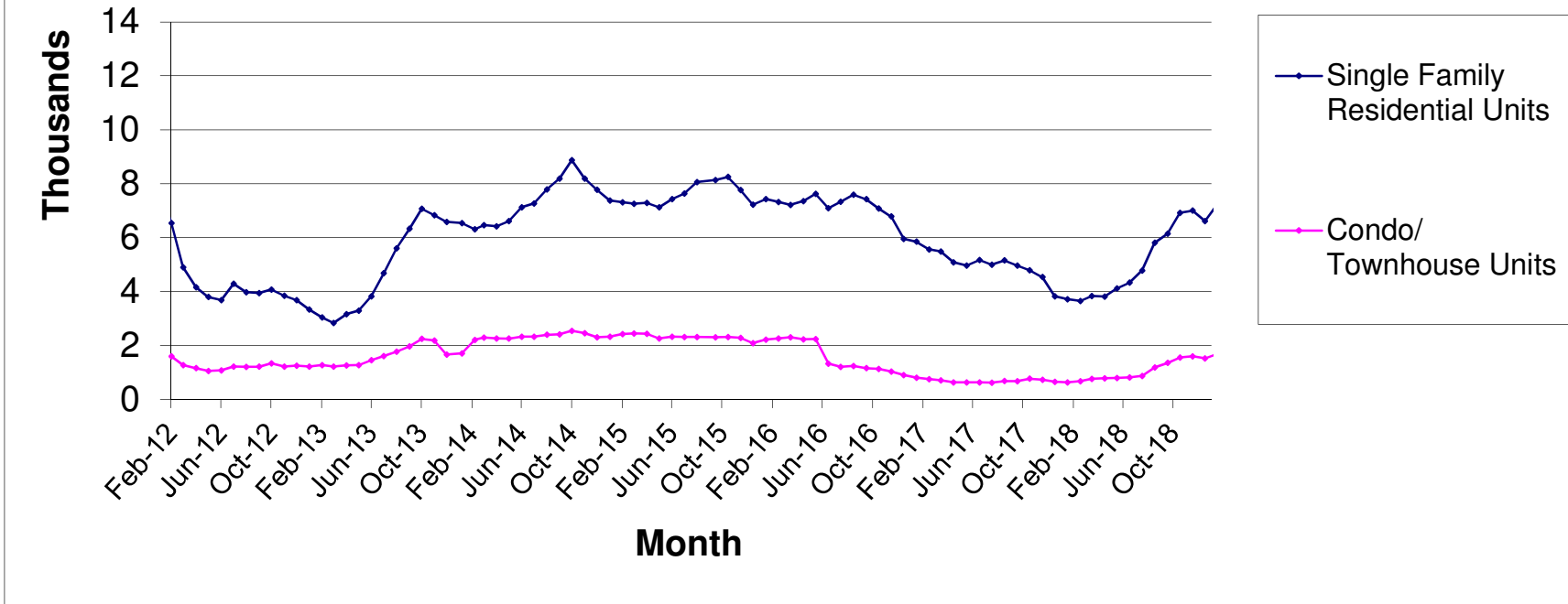
Source: Greater Las Vegas Association of REALTORS®

For media inquiries, please call George McCabe, B&P Public Relations, at (702) 325-7358.

DISCLAIMER: This data is based on information from the Greater Las Vegas Association of REALTORS® (GLVAR) Multiple Listing Service (MLS). This information is deemed reliable but is not guaranteed. MLS collects, compiles and distributes information about homes listed for sale by its subscribers who are real estate agents. MLS subscription is available to all real estate agents licensed in Nevada, but is not available to the general public. Not all licensed agents subscribe to the MLS. MLS does not include all new homes available or listings from non-MLS agents, nor does it include properties for sale by owner. The territorial jurisdiction of the GLVAR as a member of the National Association of REALTORS® includes Clark, Nye, Lincoln and White Pine Counties, Nevada, and such other areas as from time to time may be allocated to the GLVAR by the Board of Directors of the National Association of REALTORS®.



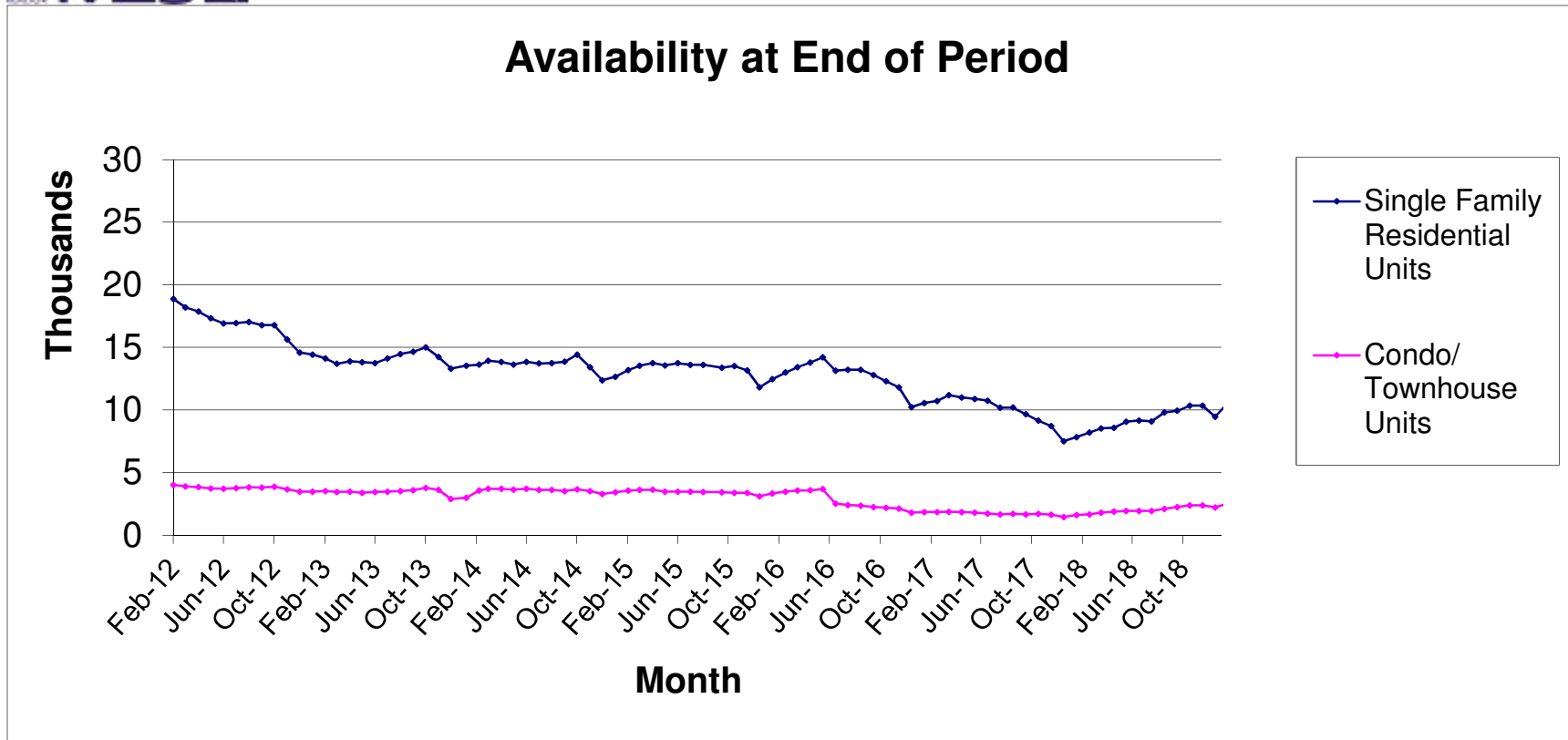
Availability Without Pending Or Contingent Offers End Of Period



Source: Greater Las Vegas Association of REALTORS®

For media inquires, please call George McCabe, B&P Public Relations, at (702) 325-7358.

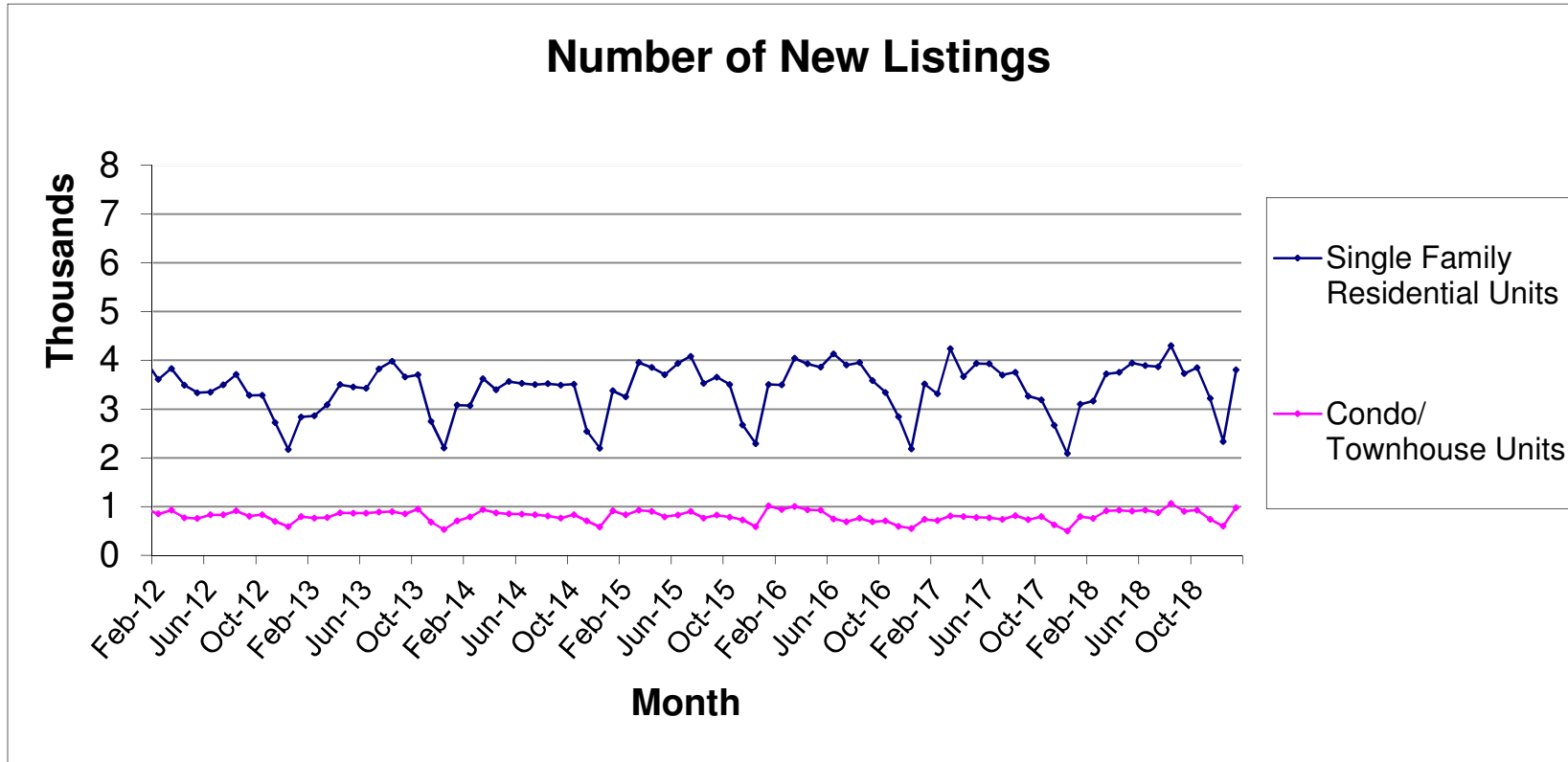
DISCLAIMER: This data is based on information from the Greater Las Vegas Association of REALTORS® (GLVAR) Multiple Listing Service (MLS). This information is deemed reliable but is not guaranteed. MLS collects, compiles and distributes information about homes listed for sale by its subscribers who are real estate agents. MLS subscription is available to all real estate agents licensed in Nevada, but is not available to the general public. Not all licensed agents subscribe to the MLS. MLS does not include all new homes available or listings from non-MLS agents, nor does it include properties for sale by owner. The territorial jurisdiction of the GLVAR as a member of the National Association of REALTORS® includes Clark, Nye, White Pine and Lincoln Counties, Nevada, and such other areas as from time to time may be allocated to the GLVAR by the Board of Directors of the National Association of REALTORS®.



Source: Greater Las Vegas Association of REALTORS®

For media inquires, please call George McCabe, B&P Public Relations, at (702) 325-7358.

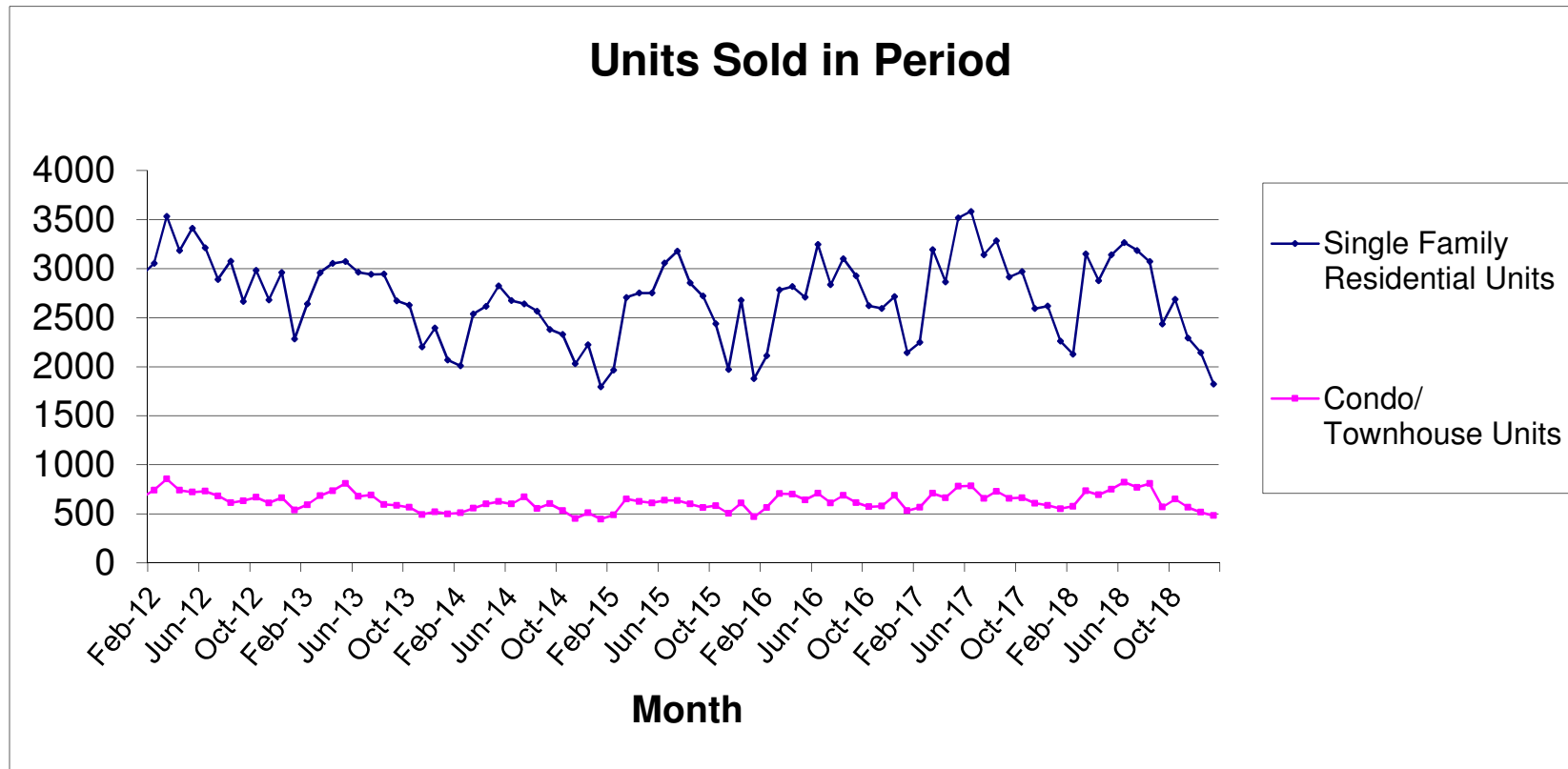
DISCLAIMER: This data is based on information from the Greater Las Vegas Association of REALTORS® (GLVAR) Multiple Listing Service (MLS). This information is deemed reliable but is not guaranteed. MLS collects, compiles and distributes information about homes listed for sale by its subscribers who are real estate agents. MLS subscription is available to all real estate agents licensed in Nevada, but is not available to the general public. Not all licensed agents subscribe to the MLS. MLS does not include all new homes available or listings from non-MLS agents, nor does it include properties for sale by owner. The territorial jurisdiction of the GLVAR as a member of the National Association of REALTORS® includes Clark, Nye, White Pine and Lincoln Counties, Nevada, and such other areas as from time to time may be allocated to the GLVAR by the Board of Directors of the National Association of REALTORS®.



Source: Greater Las Vegas Association of REALTORS®

For media inquires, please call George McCabe, B&P Public Relations, at (702) 325-7358.

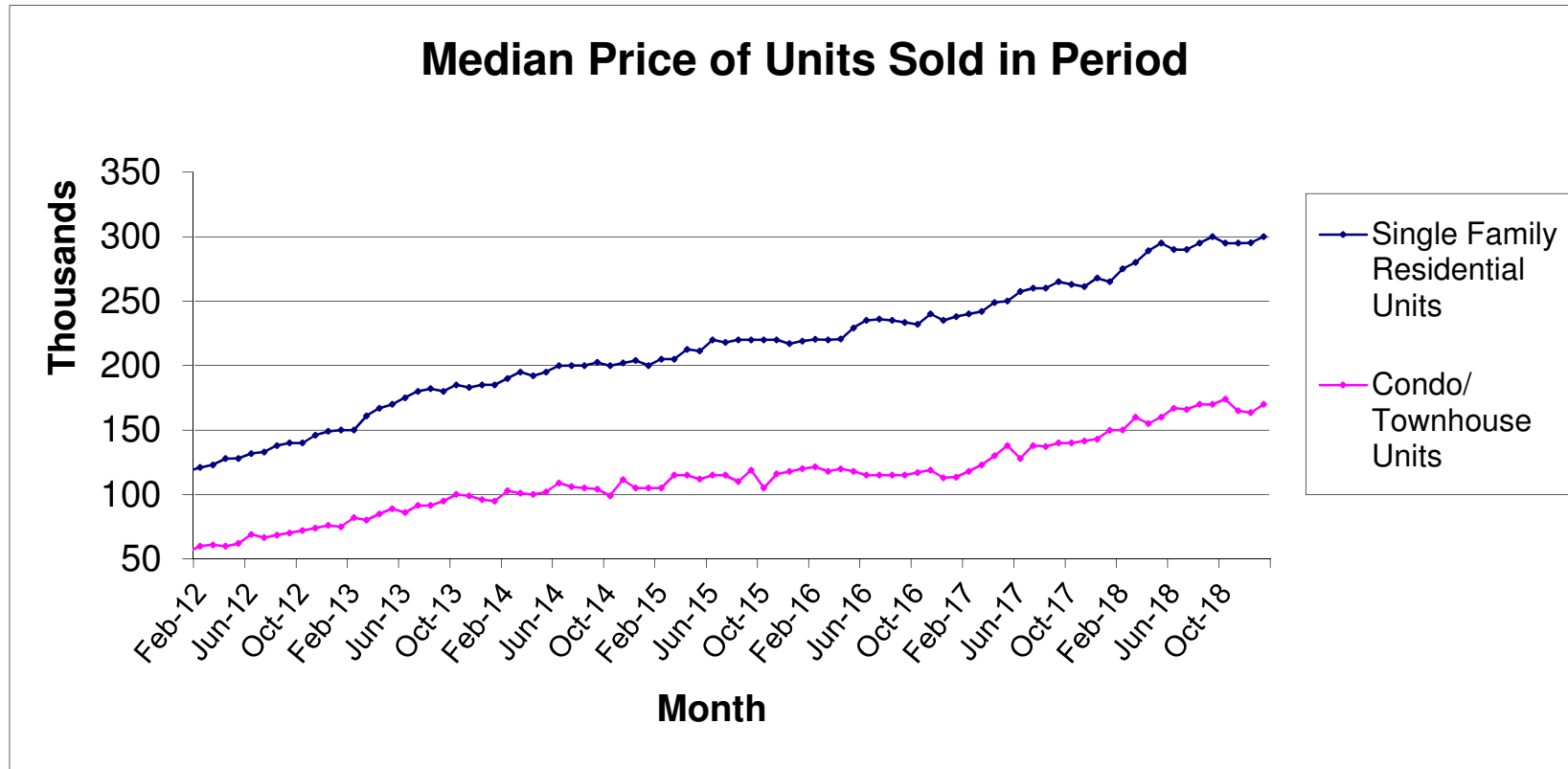
DISCLAIMER: This data is based on information from the Greater Las Vegas Association of REALTORS® (GLVAR) Multiple Listing Service (MLS). This information is deemed reliable but is not guaranteed. MLS collects, compiles and distributes information about homes listed for sale by its subscribers who are real estate agents. MLS subscription is available to all real estate agents licensed in Nevada, but is not available to the general public. Not all licensed agents subscribe to the MLS. MLS does not include all new homes available or listings from non-MLS agents, nor does it include properties for sale by owner. The territorial jurisdiction of the GLVAR as a member of the National Association of REALTORS® includes Clark, Nye, White Pine and Lincoln Counties, Nevada, and such other areas as from time to time may be allocated to the GLVAR by the Board of Directors of the National Association of REALTORS®.



Source: Greater Las Vegas Association of REALTORS®

For media inquires, please call George McCabe, B&P Public Relations, at (702) 325-7358.

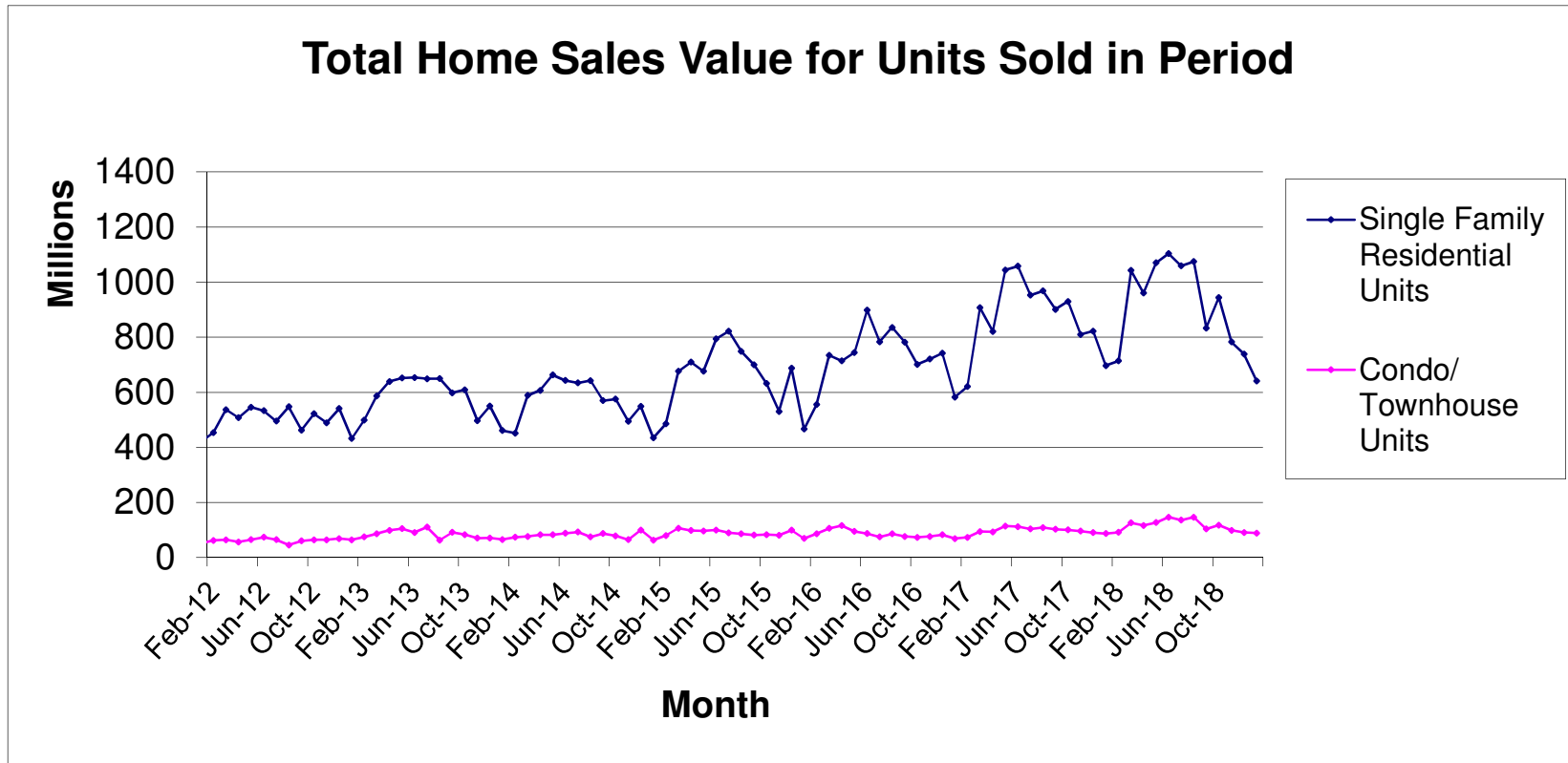
DISCLAIMER: This data is based on information from the Greater Las Vegas Association of REALTORS® (GLVAR) Multiple Listing Service (MLS). This information is deemed reliable but is not guaranteed. MLS collects, compiles and distributes information about homes listed for sale by its subscribers who are real estate agents. MLS subscription is available to all real estate agents licensed in Nevada, but is not available to the general public. Not all licensed agents subscribe to the MLS. MLS does not include all new homes available or listings from non-MLS agents, nor does it include properties for sale by owner. The territorial jurisdiction of the GLVAR as a member of the National Association of REALTORS® includes Clark, Nye, White Pine and Lincoln Counties, Nevada, and such other areas as from time to time may be allocated to the GLVAR by the Board of Directors of the National Association of REALTORS®.



Source: Greater Las Vegas Association of REALTORS®

For media inquires, please call George McCabe, B&P Public Relations, at (702) 325-7358.

DISCLAIMER: This data is based on information from the Greater Las Vegas Association of REALTORS® (GLVAR) Multiple Listing Service (MLS). This information is deemed reliable but is not guaranteed. MLS collects, compiles and distributes information about homes listed for sale by its subscribers who are real estate agents. MLS subscription is available to all real estate agents licensed in Nevada, but is not available to the general public. Not all licensed agents subscribe to the MLS. MLS does not include all new homes available or listings from non-MLS agents, nor does it include properties for sale by owner. The territorial jurisdiction of the GLVAR as a member of the National Association of REALTORS® includes Clark, Nye, White Pine and Lincoln Counties, Nevada, and such other areas as from time to time may be allocated to the GLVAR by the Board of Directors of the National Association of REALTORS®.



Source: Greater Las Vegas Association of REALTORS®

For media inquires, please call George McCabe, B&P Public Relations, at (702) 325-7358.

DISCLAIMER: This data is based on information from the Greater Las Vegas Association of REALTORS® (GLVAR) Multiple Listing Service (MLS). This information is deemed reliable but is not guaranteed. MLS collects, compiles and distributes information about homes listed for sale by its subscribers who are real estate agents. MLS subscription is available to all real estate agents licensed in Nevada, but is not available to the general public. Not all licensed agents subscribe to the MLS. MLS does not include all new homes available or listings from non-MLS agents, nor does it include properties for sale by owner. The territorial jurisdiction of the GLVAR as a member of the National Association of REALTORS® includes Clark, Nye, White Pine and Lincoln Counties, Nevada, and such other areas as from time to time may be allocated to the GLVAR by the Board of Directors of the National Association of REALTORS®.