



## Greater Las Vegas Association of REALTORS® July 2019 Statistics

	Single Family Residential Units			Condo/Townhouse Units		
	Jul 19	Change from Jun 19	Change from Jul 18	Jul 19	Change from Jun 19	Change from Jul 18
<b>AVAILABILITY AT END OF PERIOD</b>						
# of available units listed	12,230	-1.2%	+34.5%	2,952	-0.2%	+52.6%
Median list price of available units	\$ 334,588	+1.1%	-1.0%	173,000	+1.8%	+3.6%
Average list price of available units	\$ 482,588	-0.1%	-1.1%	194,840	+0.5%	+1.3%
<b>*AVAILABILITY AT END OF PERIOD</b>						
# of available units listed w/o offers	7,808	-0.1%	+63.1%	1,864	-3.8%	+112.3%
Median list price of available units w/o offers	\$ 349,989	-0.0%	-8.8%	\$ 169,250	-0.4%	+0.1%
Average list price of available units w/o offers	\$ 545,402	-0.6%	-8.9%	\$ 197,139	+0.1%	-2.4%
<b>NEW LISTINGS THIS PERIOD</b>						
# of new listings	4,123	-2.0%	+6.6%	934	-6.4%	+6.7%
Median price of new listings	\$ 324,900	+0.0%	+3.1%	\$ 180,000	+0.1%	+2.9%
Average price of new listings	\$ 404,407	-3.9%	+2.7%	\$ 196,632	+1.7%	+5.1%
<b>UNITS SOLD THIS PERIOD</b>						
# of units sold	3,159	+8.8%	-0.8%	724	+0.1%	-5.9%
Median price of units sold	\$ 303,000	-0.3%	+4.5%	\$ 175,000	-1.6%	+5.4%
Average price of units sold	\$ 359,198	+1.5%	+8.1%	\$ 183,396	-3.0%	+3.6%
<b>TIME ON MARKET FOR UNITS SOLD THIS PERIOD</b>						
	Jul 19	Jun 19	Jul 18	Jul 19	Jun 19	Jul 18
0-30 days	57.6%	57.7%	74.8%	54.1%	55.6%	74.0%
31-60 days	20.4%	21.1%	14.2%	20.2%	22.1%	15.5%
61-90 days	10.8%	10.0%	5.2%	11.6%	8.3%	5.2%
91-120 days	4.8%	4.8%	2.4%	5.5%	6.6%	2.5%
121+ days	6.3%	6.5%	3.4%	8.6%	7.3%	2.9%
<b>TOTAL HOME SALES DOLLAR VALUE FOR UNITS SOLD THIS PERIOD</b>						
	Jul 19	Change from Jun 19	Change from Jul 18	Jul 19	Change from Jun 19	Change from Jul 18
	\$ 1,134,707,506	+10.4%	+7.2%	\$ 132,778,716	-2.8%	-2.4%

**\*This category reflects the existing market availability of listings without pending or contingent offers.**

Source: Greater Las Vegas Association of REALTORS®

For media inquiries, please call George McCabe, with B&P Public Relations, at (702) 325-7358.

DISCLAIMER: This data is based on information from the Greater Las Vegas Association of REALTORS® (GLVAR) Multiple Listing Service (MLS). This information is deemed reliable but is not guaranteed. MLS collects, compiles and distributes information about homes listed for sale by its subscribers who are real estate agents. MLS subscription is available to all real estate agents licensed in Nevada, but is not available to the general public. Not all licensed agents subscribe to the MLS. MLS does not include all new homes available or listings from non-MLS agents, nor does it include properties for sale by owner. The territorial jurisdiction of the GLVAR as a member of the National Association of REALTORS® includes Clark, Nye, Lincoln and White Pine Counties, Nevada, and such other areas as from time to time may be allocated to the GLVAR by the Board of Directors of the National Association of REALTORS®.



## Greater Las Vegas Association of REALTORS® July 2019 Statistics

### Sold Units Statistics by Area (see map)

Area	Single Family Residential Units			Condo/Townhouse Units		
	# of units sold	Median Sold Price	Average Sold Price	# of units sold	Median Sold Price	Average Sold Price
101 - North	39	\$205,000	\$204,326	2	\$131,500	\$131,500
102 - North	111	\$317,500	\$350,471	12	\$212,500	\$223,807
103 - North	376	\$279,950	\$289,202	47	\$214,900	\$208,937
201 - East	37	\$203,000	\$198,443	6	\$105,000	\$104,167
202 - East	70	\$225,000	\$231,639	23	\$104,000	\$113,530
203 - East	78	\$250,000	\$277,677	27	\$140,000	\$137,402
204 - East	112	\$250,000	\$266,385	24	\$154,250	\$151,646
301 - South	53	\$260,000	\$273,381	40	\$154,500	\$155,426
302 - South	73	\$268,000	\$283,689	44	\$125,750	\$129,987
303 - South	140	\$300,000	\$336,546	42	\$196,200	\$192,269
401 - North West	16	\$244,250	\$280,375	4	\$103,500	\$106,250
402 - North West	91	\$235,000	\$241,342	24	\$125,300	\$130,358
403 - North West	93	\$271,000	\$312,490	61	\$152,000	\$154,276
404 - North West	154	\$410,000	\$504,672	38	\$256,200	\$268,547
405 - North West	303	\$319,500	\$364,500	35	\$180,000	\$187,877
501 - South West	58	\$274,750	\$312,437	35	\$165,000	\$164,765
502 - South West	146	\$377,750	\$625,726	33	\$163,000	\$189,275
503 - South West	135	\$340,000	\$504,006	70	\$151,000	\$188,295
504 - South West	164	\$301,500	\$355,467	15	\$175,000	\$170,868
505 - South West	188	\$330,500	\$389,001	11	\$248,000	\$248,000
601 - Henderson	30	\$327,000	\$427,123	16	\$189,000	\$194,587
602 - Henderson	89	\$345,000	\$374,587	38	\$225,500	\$226,461
603 - Henderson	57	\$343,500	\$376,905	10	\$259,500	\$271,280
604 - Henderson	52	\$295,000	\$306,288	6	\$179,000	\$176,004
605 - Henderson	96	\$305,745	\$328,467	19	\$194,900	\$203,162
606 - Henderson	203	\$400,000	\$463,044	27	\$263,000	\$258,141
701 - Boulder City	16	\$312,500	\$354,156	7	\$133,000	\$165,000
702 - Boulder City	1	\$585,000	\$585,000	5	\$250,000	\$270,800
800 - Mesquite	2	\$236,000	\$236,000	1	\$173,000	\$173,000
801 - Muddy River (Moapa, Glendale, Logandale, Overton)	9	\$284,000	\$275,656	-	\$0	\$0
802 - Mt. Charleston/Lee Canyon	1	\$380,000	\$380,000	-	\$0	\$0
803 - Indian Springs/Cold Creek	-	\$0	\$0	-	\$0	\$0
804 - Mountain Springs	-	\$0	\$0	-	\$0	\$0
805 - Blue Diamond	-	\$0	\$0	-	\$0	\$0
806 - State Line/Jean/Goodsprings	-	\$0	\$0	-	\$0	\$0
807 - Sandy Valley	-	\$0	\$0	-	\$0	\$0
808 - Laughlin	4	\$159,950	\$174,975	1	\$75,500	\$75,500
809 - Other Clark County	-	\$0	\$0	-	\$0	\$0
810 - Pahrump	58	\$250,000	\$262,080	1	\$108,000	\$108,000
811 - Nye County	-	\$0	\$0	-	\$0	\$0
812 - Lincoln County	1	\$325,000	\$325,000	-	\$0	\$0
813 - Other Nevada	-	\$0	\$0	-	\$0	\$0
814 - Amargosa Valley	-	\$0	\$0	-	\$0	\$0
815 - Beatty	-	\$0	\$0	-	\$0	\$0
816 - White Pine County	10	\$149,500	\$139,819	-	\$0	\$0
817 - Searchlight	-	\$0	\$0	-	\$0	\$0
900 - Outside Nevada	5	\$335,000	\$385,602	-	\$0	\$0

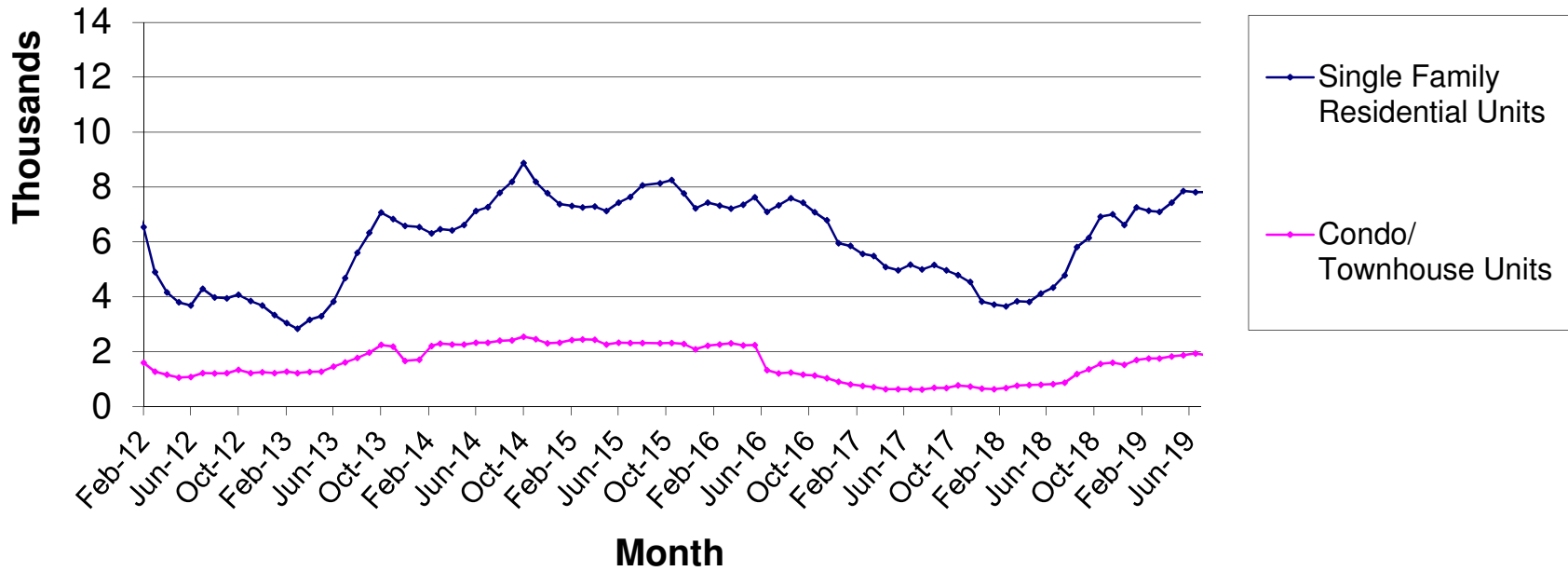
Source: Greater Las Vegas Association of REALTORS®

For media inquiries, please call George McCabe, B&P Public Relations, at (702) 325-7358.

DISCLAIMER: This data is based on information from the Greater Las Vegas Association of REALTORS® (GLVAR) Multiple Listing Service (MLS). This information is deemed reliable but is not guaranteed. MLS collects, compiles and distributes information about homes listed for sale by its subscribers who are real estate agents. MLS subscription is available to all real estate agents licensed in Nevada, but is not available to the general public. Not all licensed agents subscribe to the MLS. MLS does not include all new homes available or listings from non-MLS agents, nor does it include properties for sale by owner. The territorial jurisdiction of the GLVAR as a member of the National Association of REALTORS® includes Clark, Nye, Lincoln and White Pine Counties, Nevada, and such other areas as from time to time may be allocated to the GLVAR by the Board of Directors of the National Association of REALTORS®.



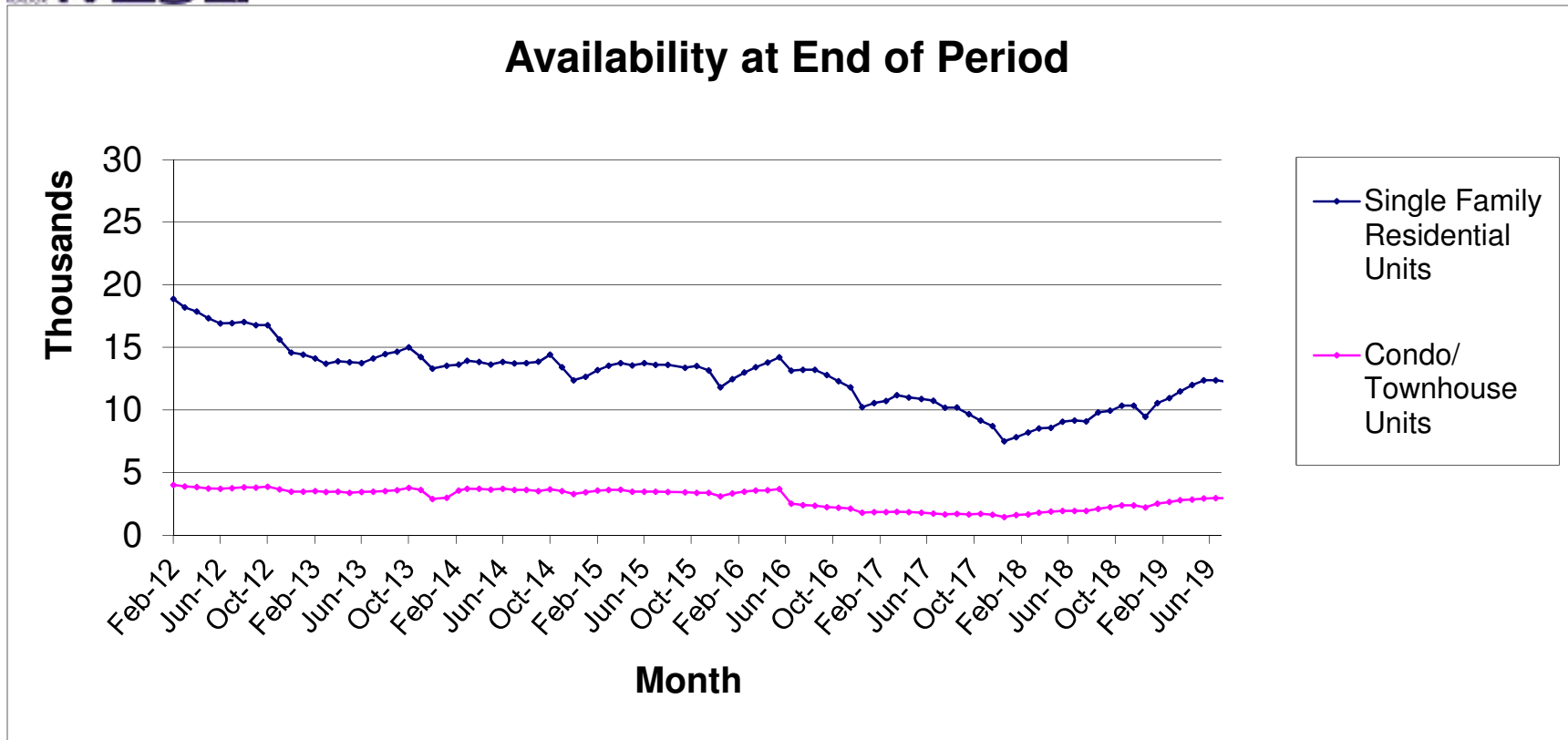
### Availability Without Pending Or Contingent Offers End Of Period



Source: Greater Las Vegas Association of REALTORS®

For media inquires, please call George McCabe, B&P Public Relations, at (702) 325-7358.

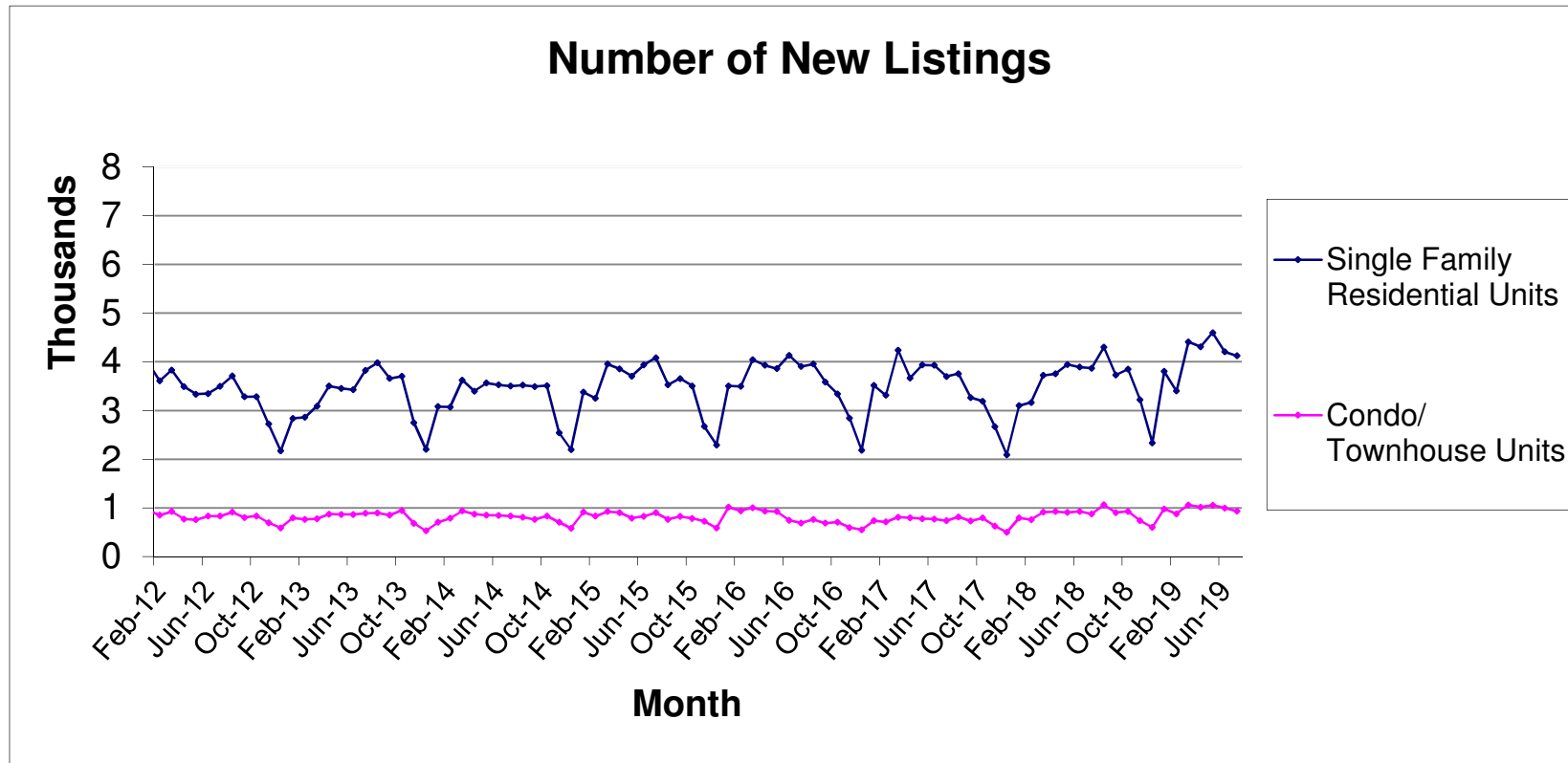
DISCLAIMER: This data is based on information from the Greater Las Vegas Association of REALTORS® (GLVAR) Multiple Listing Service (MLS). This information is deemed reliable but is not guaranteed. MLS collects, compiles and distributes information about homes listed for sale by its subscribers who are real estate agents. MLS subscription is available to all real estate agents licensed in Nevada, but is not available to the general public. Not all licensed agents subscribe to the MLS. MLS does not include all new homes available or listings from non-MLS agents, nor does it include properties for sale by owner. The territorial jurisdiction of the GLVAR as a member of the National Association of REALTORS® includes Clark, Nye, White Pine and Lincoln Counties, Nevada, and such other areas as from time to time may be allocated to the GLVAR by the Board of Directors of the National Association of REALTORS®.



Source: Greater Las Vegas Association of REALTORS®

For media inquires, please call George McCabe, B&P Public Relations, at (702) 325-7358.

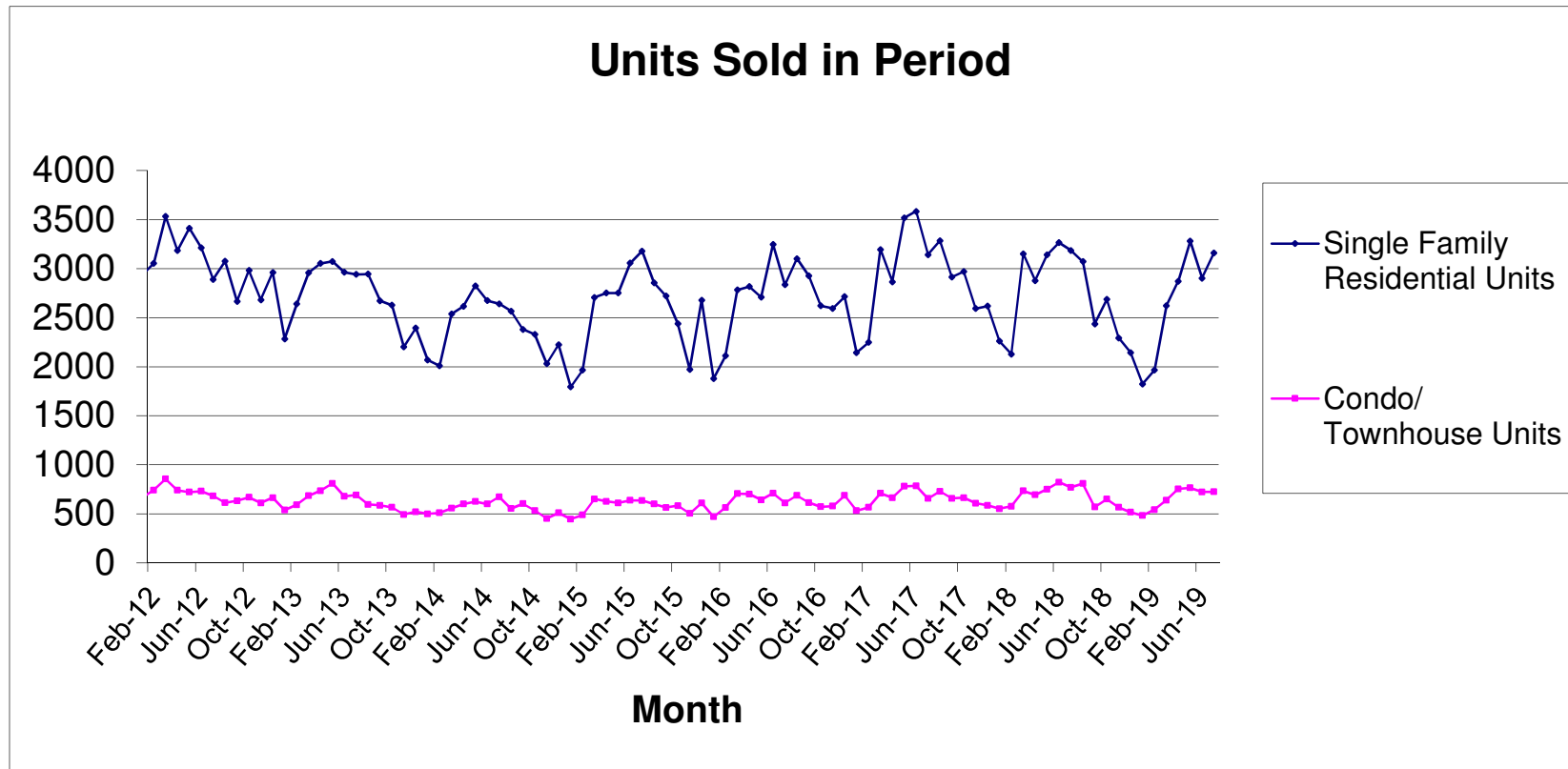
DISCLAIMER: This data is based on information from the Greater Las Vegas Association of REALTORS® (GLVAR) Multiple Listing Service (MLS). This information is deemed reliable but is not guaranteed. MLS collects, compiles and distributes information about homes listed for sale by its subscribers who are real estate agents. MLS subscription is available to all real estate agents licensed in Nevada, but is not available to the general public. Not all licensed agents subscribe to the MLS. MLS does not include all new homes available or listings from non-MLS agents, nor does it include properties for sale by owner. The territorial jurisdiction of the GLVAR as a member of the National Association of REALTORS® includes Clark, Nye, White Pine and Lincoln Counties, Nevada, and such other areas as from time to time may be allocated to the GLVAR by the Board of Directors of the National Association of REALTORS®.



Source: Greater Las Vegas Association of REALTORS®

For media inquires, please call George McCabe, B&P Public Relations, at (702) 325-7358.

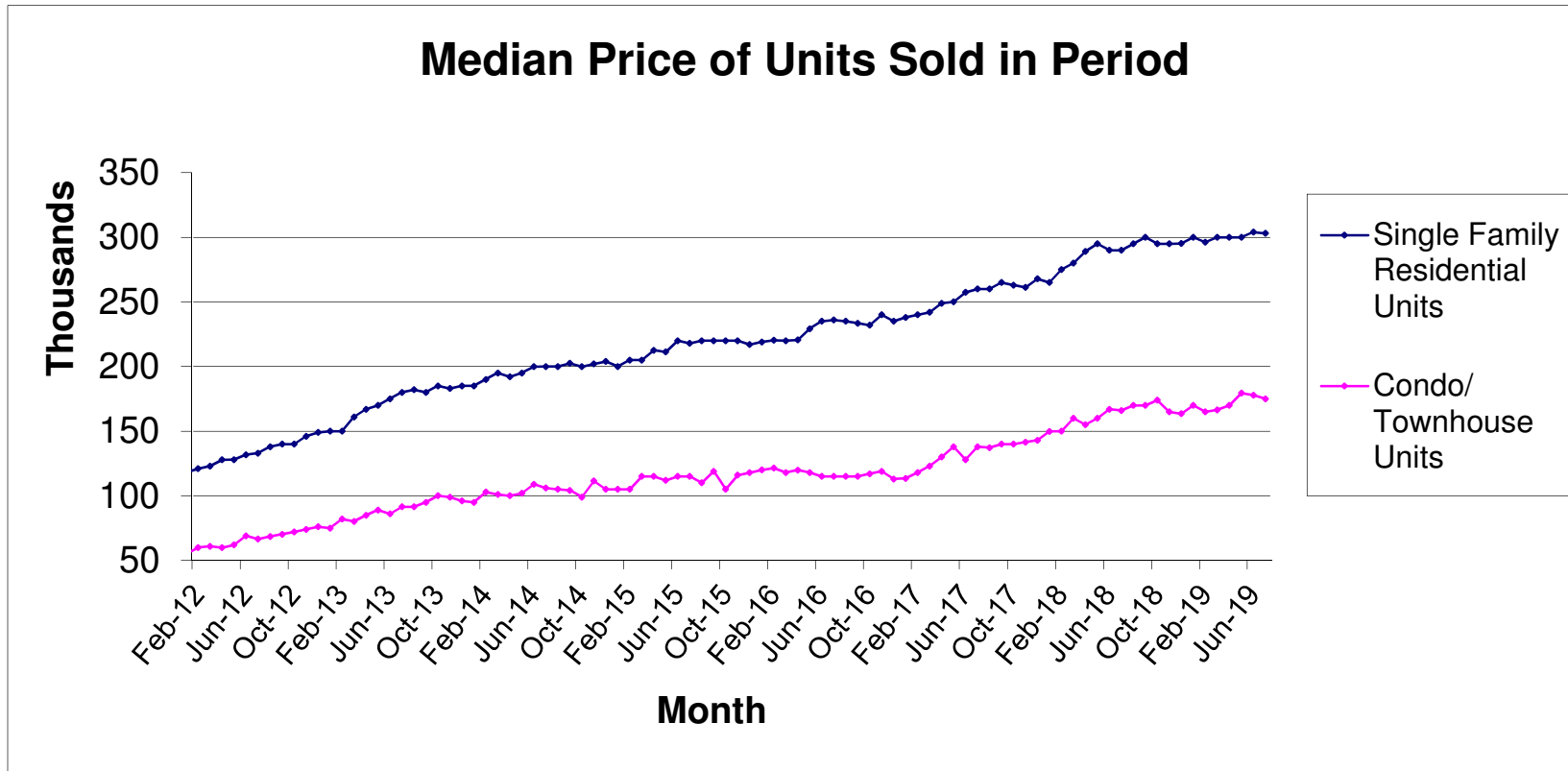
**DISCLAIMER:** This data is based on information from the Greater Las Vegas Association of REALTORS® (GLVAR) Multiple Listing Service (MLS). This information is deemed reliable but is not guaranteed. MLS collects, compiles and distributes information about homes listed for sale by its subscribers who are real estate agents. MLS subscription is available to all real estate agents licensed in Nevada, but is not available to the general public. Not all licensed agents subscribe to the MLS. MLS does not include all new homes available or listings from non-MLS agents, nor does it include properties for sale by owner. The territorial jurisdiction of the GLVAR as a member of the National Association of REALTORS® includes Clark, Nye, White Pine and Lincoln Counties, Nevada, and such other areas as from time to time may be allocated to the GLVAR by the Board of Directors of the National Association of REALTORS®.



Source: Greater Las Vegas Association of REALTORS®

For media inquiries, please call George McCabe, B&P Public Relations, at (702) 325-7358.

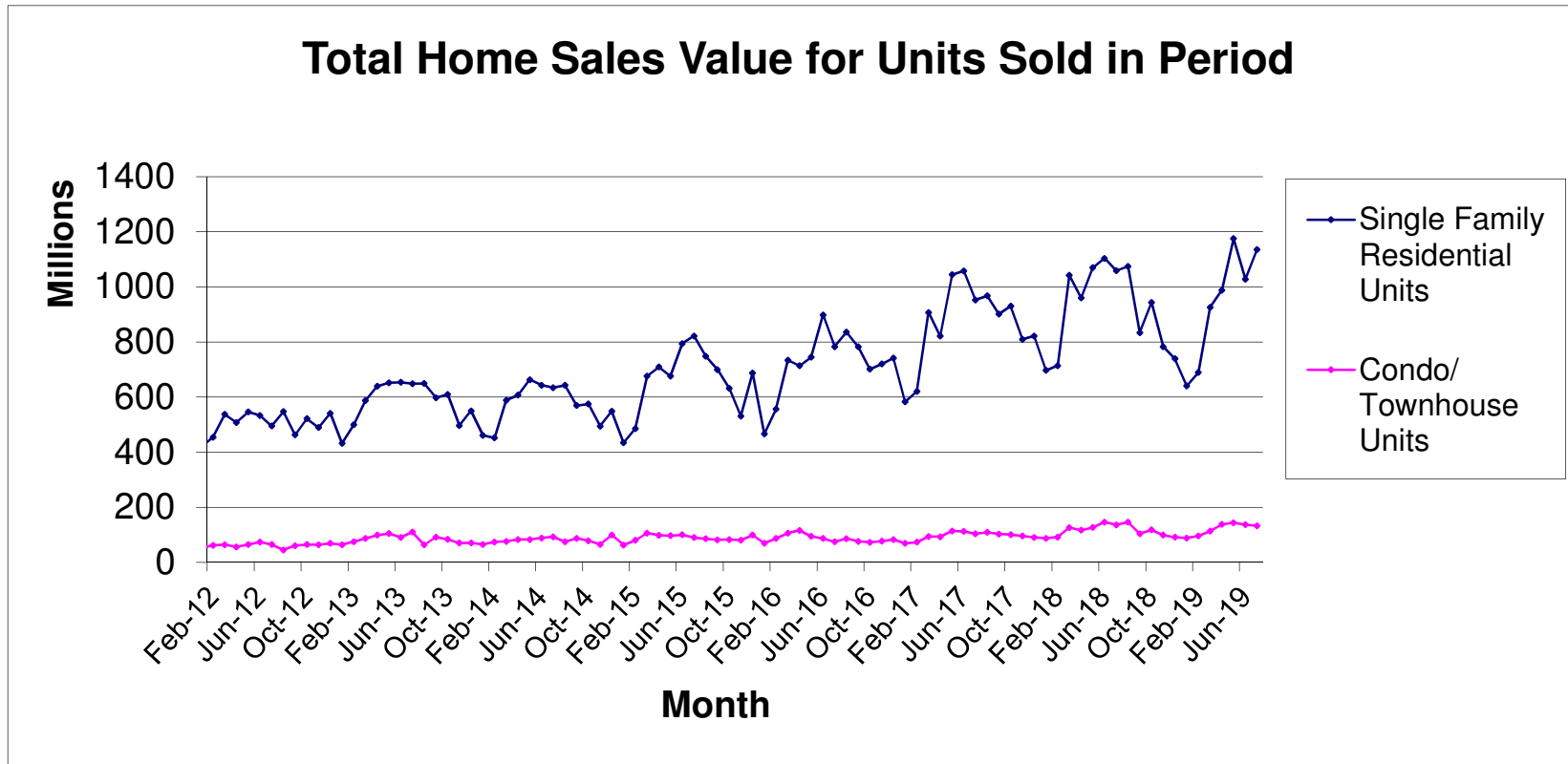
**DISCLAIMER:** This data is based on information from the Greater Las Vegas Association of REALTORS® (GLVAR) Multiple Listing Service (MLS). This information is deemed reliable but is not guaranteed. MLS collects, compiles and distributes information about homes listed for sale by its subscribers who are real estate agents. MLS subscription is available to all real estate agents licensed in Nevada, but is not available to the general public. Not all licensed agents subscribe to the MLS. MLS does not include all new homes available or listings from non-MLS agents, nor does it include properties for sale by owner. The territorial jurisdiction of the GLVAR as a member of the National Association of REALTORS® includes Clark, Nye, White Pine and Lincoln Counties, Nevada, and such other areas as from time to time may be allocated to the GLVAR by the Board of Directors of the National Association of REALTORS®.



Source: Greater Las Vegas Association of REALTORS®

For media inquires, please call George McCabe, B&P Public Relations, at (702) 325-7358.

DISCLAIMER: This data is based on information from the Greater Las Vegas Association of REALTORS® (GLVAR) Multiple Listing Service (MLS). This information is deemed reliable but is not guaranteed. MLS collects, compiles and distributes information about homes listed for sale by its subscribers who are real estate agents. MLS subscription is available to all real estate agents licensed in Nevada, but is not available to the general public. Not all licensed agents subscribe to the MLS. MLS does not include all new homes available or listings from non-MLS agents, nor does it include properties for sale by owner. The territorial jurisdiction of the GLVAR as a member of the National Association of REALTORS® includes Clark, Nye, White Pine and Lincoln Counties, Nevada, and such other areas as from time to time may be allocated to the GLVAR by the Board of Directors of the National Association of REALTORS®.



Source: Greater Las Vegas Association of REALTORS®

For media inquiries, please call George McCabe, B&P Public Relations, at (702) 325-7358.

**DISCLAIMER:** This data is based on information from the Greater Las Vegas Association of REALTORS® (GLVAR) Multiple Listing Service (MLS). This information is deemed reliable but is not guaranteed. MLS collects, compiles and distributes information about homes listed for sale by its subscribers who are real estate agents. MLS subscription is available to all real estate agents licensed in Nevada, but is not available to the general public. Not all licensed agents subscribe to the MLS. MLS does not include all new homes available or listings from non-MLS agents, nor does it include properties for sale by owner. The territorial jurisdiction of the GLVAR as a member of the National Association of REALTORS® includes Clark, Nye, White Pine and Lincoln Counties, Nevada, and such other areas as from time to time may be allocated to the GLVAR by the Board of Directors of the National Association of REALTORS®.