



Greater Las Vegas Association of REALTORS® Oct 2019 Statistics

	Single Family Residential Units			Condo/Townhouse Units		
	Oct 19	Change from Sept 19	Change from Oct 18	Oct 19	Change from Sept 19	Change from Oct 18
AVAILABILITY AT END OF PERIOD						
# of available units listed	11,181	-1.9%	+7.9%	2,714	-1.3%	+14.3%
Median list price of available units	\$ 335,000	+0.3%	+0.1%	174,990	+0.6%	+6.1%
Average list price of available units	\$ 492,545	+0.8%	+3.0%	202,022	+1.1%	+6.3%
*AVAILABILITY AT END OF PERIOD						
# of available units listed w/o offers	7,210	-1.7%	+4.2%	1,808	-1.2%	+15.7%
Median list price of available units w/o offers	\$ 350,000	+0.1%	+0.0%	\$ 171,998	-0.0%	+4.2%
Average list price of available units w/o offers	\$ 549,748	+0.4%	+2.7%	\$ 203,391	+0.6%	+6.4%
NEW LISTINGS THIS PERIOD						
# of new listings	3,544	+0.6%	-7.9%	848	+2.0%	-8.6%
Median price of new listings	\$ 325,000	+0.0%	+2.9%	\$ 180,000	+0.0%	+4.7%
Average price of new listings	\$ 413,019	+3.2%	+0.2%	\$ 205,353	+1.4%	+9.1%
UNITS SOLD THIS PERIOD						
# of units sold	2,899	+5.4%	+7.9%	672	-1.2%	+3.5%
Median price of units sold	\$ 307,000	-1.0%	+4.1%	\$ 171,250	+0.1%	-1.6%
Average price of units sold	\$ 356,033	-1.6%	+1.4%	\$ 189,246	+2.7%	+4.1%
TIME ON MARKET FOR UNITS SOLD THIS PERIOD						
	Oct 19	Sep 19	Oct 18	Oct 19	Sep 19	Oct 18
0-30 days	52.6%	53.9%	65.4%	49.9%	50.7%	69.8%
31-60 days	21.8%	21.6%	20.4%	19.9%	21.5%	17.4%
61-90 days	11.4%	11.4%	7.8%	14.1%	10.4%	7.6%
91-120 days	6.6%	6.7%	3.0%	8.3%	8.4%	2.5%
121+ days	7.6%	6.5%	3.4%	7.7%	9.0%	2.8%
TOTAL HOME SALES DOLLAR VALUE FOR UNITS SOLD THIS PERIOD						
	Oct 19	Change from Sept 19	Change from Oct 18	Oct 19	Change from Sept 19	Change from Oct 18
	\$ 1,032,139,076	+3.8%	+9.4%	\$ 127,173,012	+1.5%	+7.8%

***This category reflects the existing market availability of listings without pending or contingent offers.**

Source: Greater Las Vegas Association of REALTORS®

For media inquiries, please call George McCabe, with B&P Public Relations, at (702) 325-7358.

DISCLAIMER: This data is based on information from the Greater Las Vegas Association of REALTORS® (GLVAR) Multiple Listing Service (MLS). This information is deemed reliable but is not guaranteed. MLS collects, compiles and distributes information about homes listed for sale by its subscribers who are real estate agents. MLS subscription is available to all real estate agents licensed in Nevada, but is not available to the general public. Not all licensed agents subscribe to the MLS. MLS does not include all new homes available or listings from non-MLS agents, nor does it include properties for sale by owner. The territorial jurisdiction of the GLVAR as a member of the National Association of REALTORS® includes Clark, Nye, Lincoln and White Pine Counties, Nevada, and such other areas as from time to time may be allocated to the GLVAR by the Board of Directors of the National Association of REALTORS®.



Greater Las Vegas Association of REALTORS® October 2019 Statistics

Sold Units Statistics by Area (see map)

Area	Single Family Residential Units			Condo/Townhouse Units		
	# of units sold	Median Sold Price	Average Sold Price	# of units sold	Median Sold Price	Average Sold Price
101 - North	34	\$211,750	\$209,359	7	\$140,000	\$130,357
102 - North	142	\$313,010	\$353,264	7	\$219,000	\$225,500
103 - North	333	\$280,000	\$291,503	25	\$183,000	\$180,418
201 - East	36	\$180,000	\$175,860	5	\$107,000	\$106,398
202 - East	50	\$219,950	\$218,717	14	\$95,000	\$104,536
203 - East	79	\$250,000	\$263,807	10	\$139,500	\$138,264
204 - East	108	\$250,000	\$272,187	16	\$135,000	\$139,156
301 - South	59	\$250,000	\$268,550	50	\$151,500	\$161,277
302 - South	68	\$249,350	\$296,181	43	\$132,500	\$140,475
303 - South	146	\$305,000	\$325,263	32	\$188,500	\$197,813
401 - North West	14	\$222,500	\$261,271	7	\$113,000	\$111,271
402 - North West	92	\$246,000	\$247,771	32	\$127,450	\$135,894
403 - North West	77	\$295,000	\$321,877	66	\$154,750	\$156,391
404 - North West	108	\$406,000	\$492,383	42	\$269,500	\$274,118
405 - North West	255	\$313,775	\$366,108	31	\$181,000	\$190,748
501 - South West	50	\$349,500	\$366,589	20	\$151,000	\$165,620
502 - South West	143	\$391,000	\$518,509	39	\$185,000	\$246,181
503 - South West	133	\$340,000	\$372,168	86	\$165,000	\$187,425
504 - South West	170	\$318,375	\$365,990	17	\$179,000	\$187,471
505 - South West	198	\$335,000	\$376,336	10	\$247,500	\$242,178
601 - Henderson	34	\$300,000	\$427,674	15	\$205,000	\$200,093
602 - Henderson	98	\$338,500	\$362,417	29	\$225,000	\$215,665
603 - Henderson	47	\$352,000	\$403,366	9	\$172,000	\$221,611
604 - Henderson	46	\$299,950	\$333,717	2	\$173,745	\$173,745
605 - Henderson	91	\$332,000	\$370,079	18	\$226,500	\$213,075
606 - Henderson	185	\$420,000	\$553,842	33	\$283,000	\$312,476
701 - Boulder City	18	\$359,750	\$528,767	2	\$202,450	\$202,450
702 - Boulder City	-	\$0	\$0	1	\$180,000	\$180,000
800 - Mesquite	1	\$300,000	\$300,000	4	\$145,000	\$146,200
801 - Muddy River (Moapa, Glendale, Logandale, Overton)	2	\$184,500	\$184,500	-	\$0	\$0
802 - Mt. Charleston/Lee Canyon	1	\$865,000	\$865,000	1	\$215,000	\$215,000
803 - Indian Springs/Cold Creek	2	\$226,000	\$226,000	-	\$0	\$0
804 - Mountain Springs	-	\$0	\$0	-	\$0	\$0
805 - Blue Diamond	-	\$0	\$0	-	\$0	\$0
806 - State Line/Jean/Goodsprings	-	\$0	\$0	-	\$0	\$0
807 - Sandy Valley	1	\$190,000	\$190,000	-	\$0	\$0
808 - Laughlin	2	\$233,000	\$233,000	1	\$85,550	\$85,550
809 - Other Clark County	-	\$0	\$0	-	\$0	\$0
810 - Pahrump	54	\$250,000	\$258,447	1	\$101,000	\$101,000
811 - Nye County	-	\$0	\$0	-	\$0	\$0
812 - Lincoln County	2	\$141,500	\$141,500	-	\$0	\$0
813 - Other Nevada	-	\$0	\$0	-	\$0	\$0
814 - Amargosa Valley	-	\$0	\$0	-	\$0	\$0
815 - Beatty	-	\$0	\$0	-	\$0	\$0
816 - White Pine County	19	\$104,000	\$118,816	-	\$0	\$0
817 - Searchlight	-	\$0	\$0	-	\$0	\$0
900 - Outside Nevada	2	\$732,075	\$732,075	-	\$0	\$0

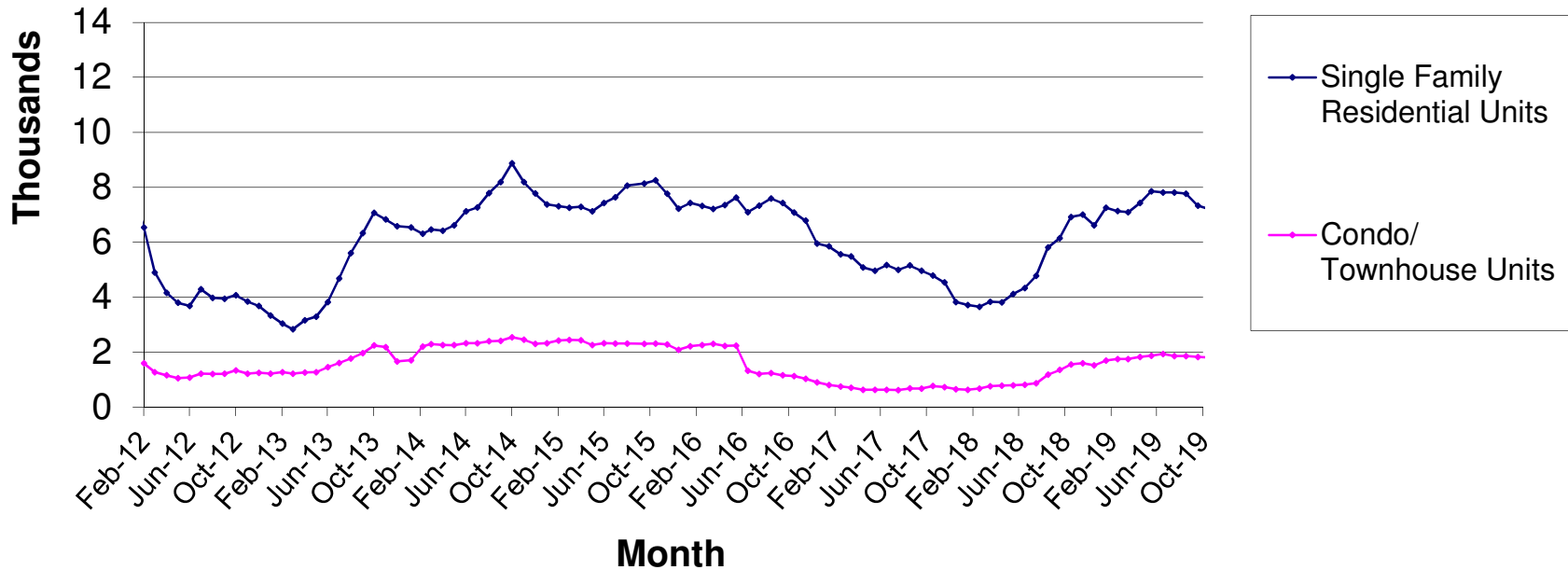
Source: Greater Las Vegas Association of REALTORS®

For media inquiries, please call George McCabe, B&P Public Relations, at (702) 325-7358.

DISCLAIMER: This data is based on information from the Greater Las Vegas Association of REALTORS® (GLVAR) Multiple Listing Service (MLS). This information is deemed reliable but is not guaranteed. MLS collects, compiles and distributes information about homes listed for sale by its subscribers who are real estate agents. MLS subscription is available to all real estate agents licensed in Nevada, but is not available to the general public. Not all licensed agents subscribe to the MLS. MLS does not include all new homes available or listings from non-MLS agents, nor does it include properties for sale by owner. The territorial jurisdiction of the GLVAR as a member of the National Association of REALTORS® includes Clark, Nye, Lincoln and White Pine Counties, Nevada, and such other areas as from time to time may be allocated to the GLVAR by the Board of Directors of the National Association of REALTORS®.



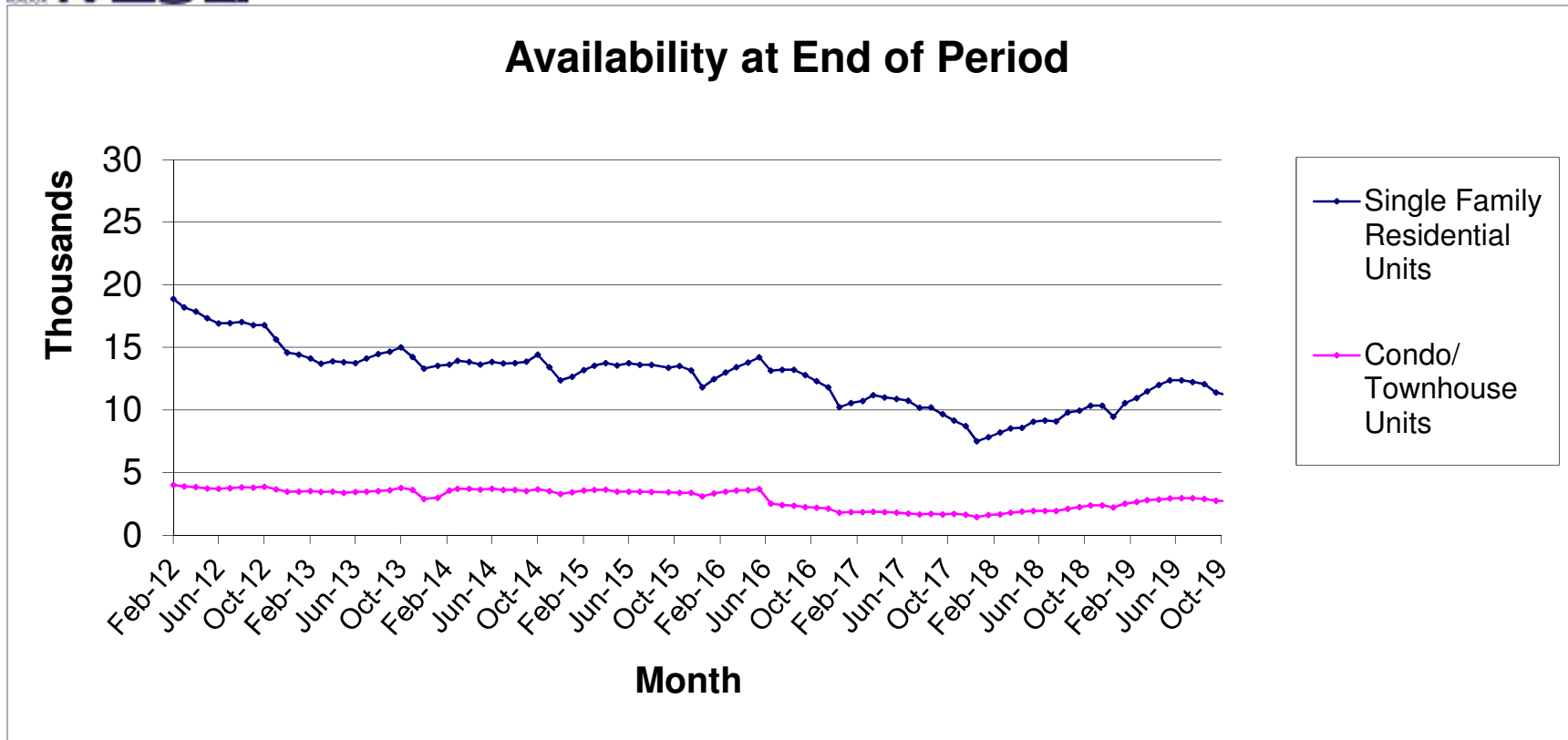
Availability Without Pending Or Contingent Offers End Of Period



Source: Greater Las Vegas Association of REALTORS®

For media inquires, please call George McCabe, B&P Public Relations, at (702) 325-7358.

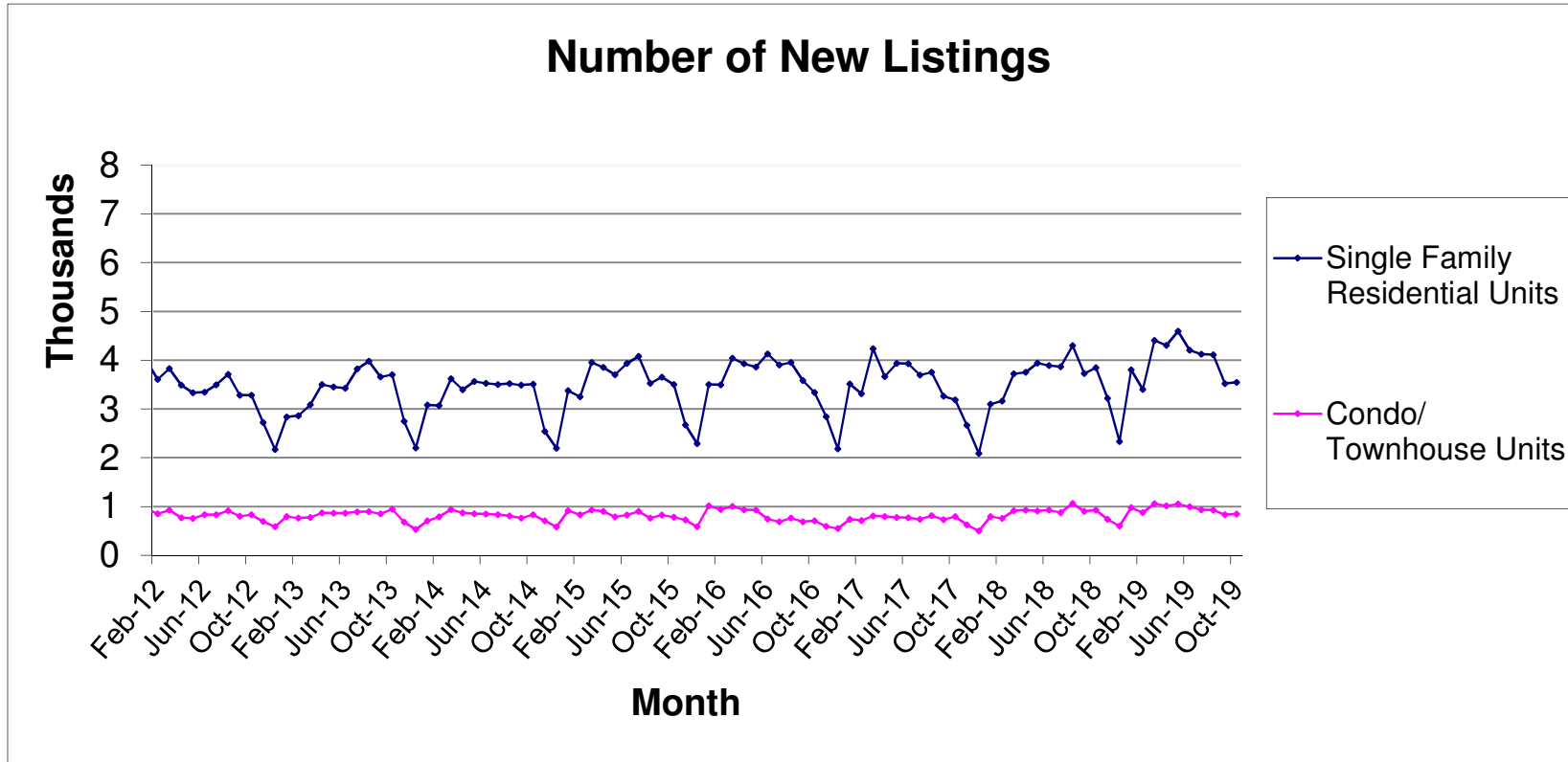
DISCLAIMER: This data is based on information from the Greater Las Vegas Association of REALTORS® (GLVAR) Multiple Listing Service (MLS). This information is deemed reliable but is not guaranteed. MLS collects, compiles and distributes information about homes listed for sale by its subscribers who are real estate agents. MLS subscription is available to all real estate agents licensed in Nevada, but is not available to the general public. Not all licensed agents subscribe to the MLS. MLS does not include all new homes available or listings from non-MLS agents, nor does it include properties for sale by owner. The territorial jurisdiction of the GLVAR as a member of the National Association of REALTORS® includes Clark, Nye, White Pine and Lincoln Counties, Nevada, and such other areas as from time to time may be allocated to the GLVAR by the Board of Directors of the National Association of REALTORS®.



Source: Greater Las Vegas Association of REALTORS®

For media inquires, please call George McCabe, B&P Public Relations, at (702) 325-7358.

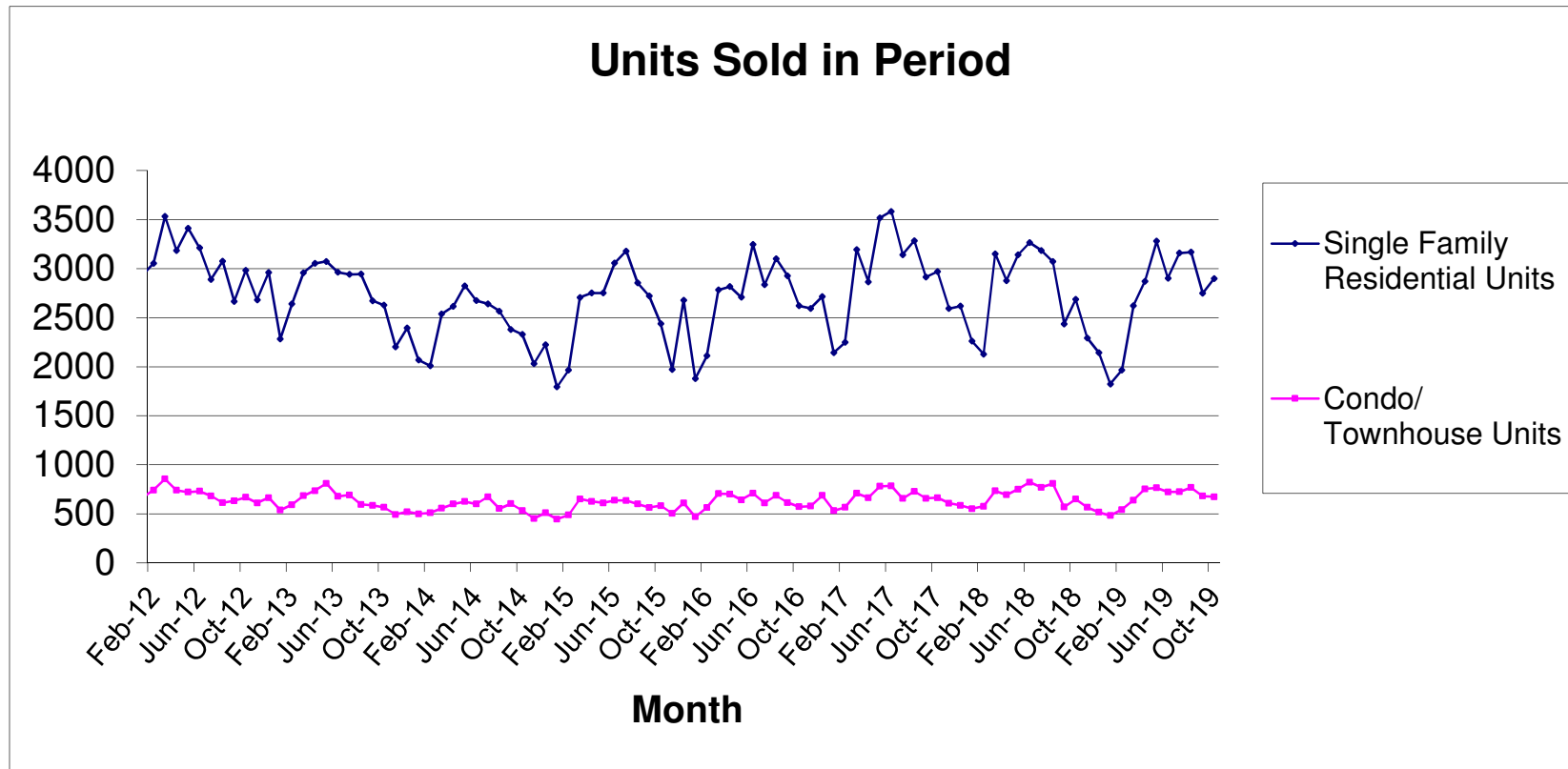
DISCLAIMER: This data is based on information from the Greater Las Vegas Association of REALTORS® (GLVAR) Multiple Listing Service (MLS). This information is deemed reliable but is not guaranteed. MLS collects, compiles and distributes information about homes listed for sale by its subscribers who are real estate agents. MLS subscription is available to all real estate agents licensed in Nevada, but is not available to the general public. Not all licensed agents subscribe to the MLS. MLS does not include all new homes available or listings from non-MLS agents, nor does it include properties for sale by owner. The territorial jurisdiction of the GLVAR as a member of the National Association of REALTORS® includes Clark, Nye, White Pine and Lincoln Counties, Nevada, and such other areas as from time to time may be allocated to the GLVAR by the Board of Directors of the National Association of REALTORS®.



Source: Greater Las Vegas Association of REALTORS®

For media inquires, please call George McCabe, B&P Public Relations, at (702) 325-7358.

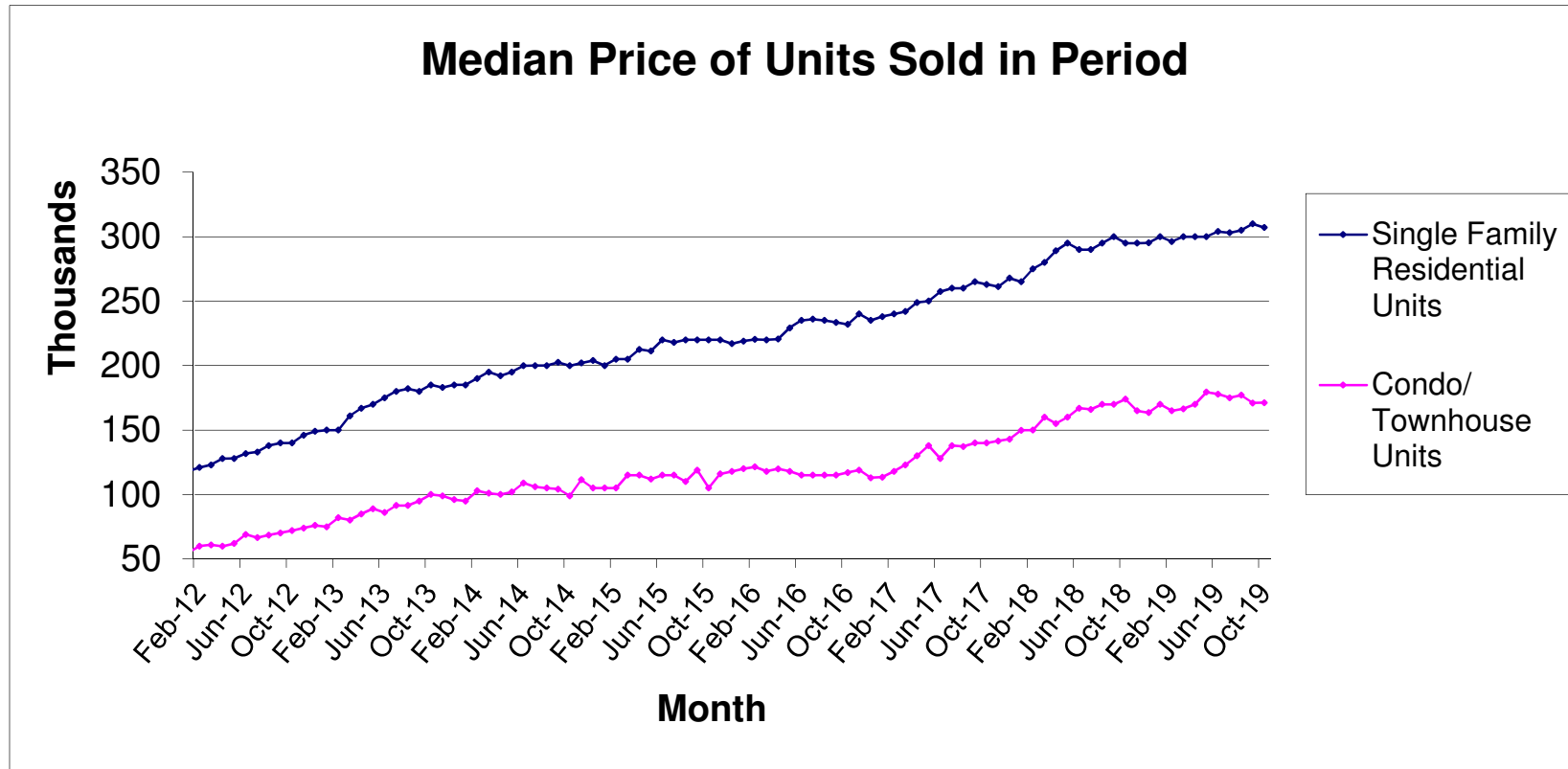
DISCLAIMER: This data is based on information from the Greater Las Vegas Association of REALTORS® (GLVAR) Multiple Listing Service (MLS). This information is deemed reliable but is not guaranteed. MLS collects, compiles and distributes information about homes listed for sale by its subscribers who are real estate agents. MLS subscription is available to all real estate agents licensed in Nevada, but is not available to the general public. Not all licensed agents subscribe to the MLS. MLS does not include all new homes available or listings from non-MLS agents, nor does it include properties for sale by owner. The territorial jurisdiction of the GLVAR as a member of the National Association of REALTORS® includes Clark, Nye, White Pine and Lincoln Counties, Nevada, and such other areas as from time to time may be allocated to the GLVAR by the Board of Directors of the National Association of REALTORS®.



Source: Greater Las Vegas Association of REALTORS®

For media inquires, please call George McCabe, B&P Public Relations, at (702) 325-7358.

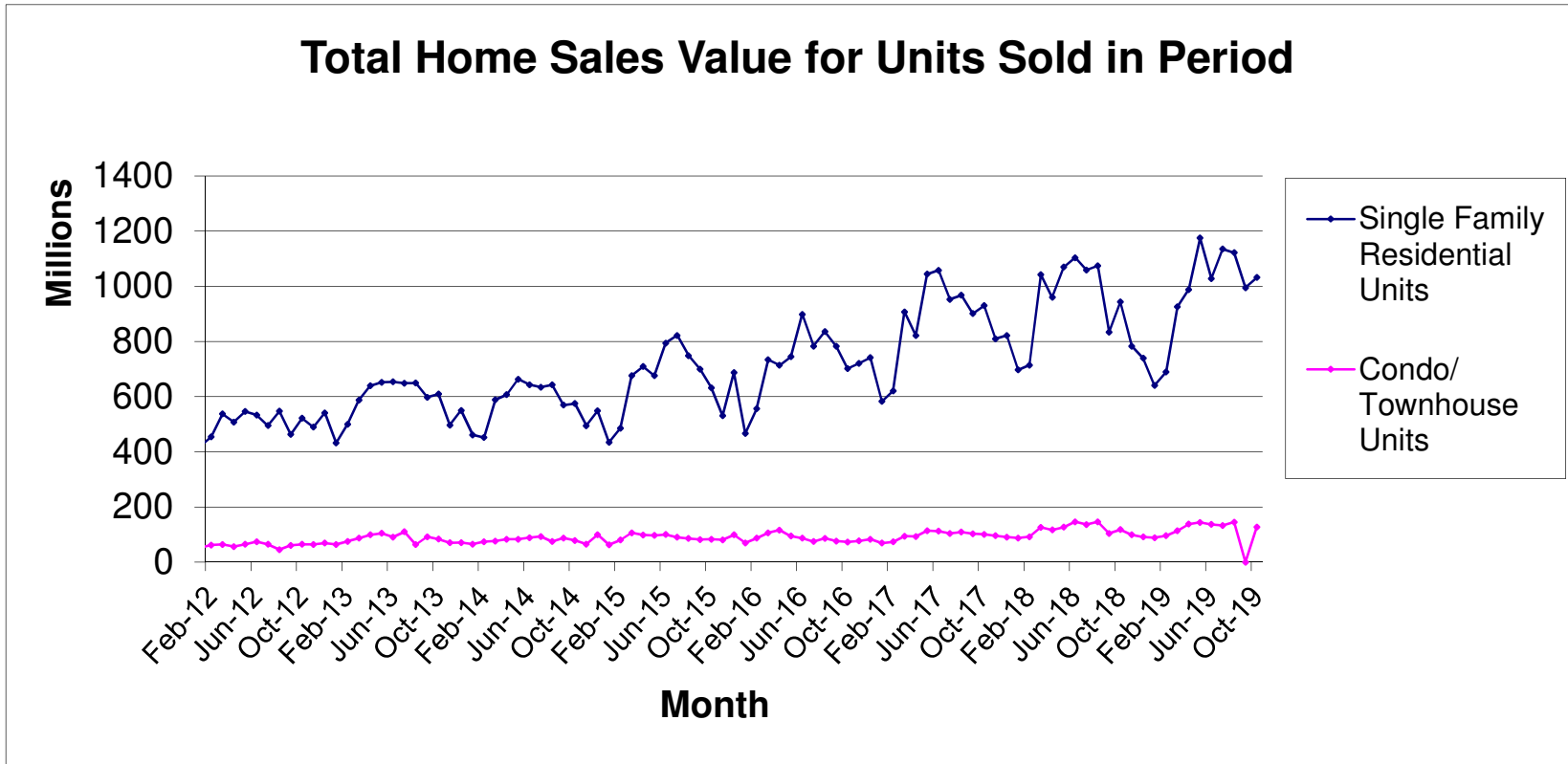
DISCLAIMER: This data is based on information from the Greater Las Vegas Association of REALTORS® (GLVAR) Multiple Listing Service (MLS). This information is deemed reliable but is not guaranteed. MLS collects, compiles and distributes information about homes listed for sale by its subscribers who are real estate agents. MLS subscription is available to all real estate agents licensed in Nevada, but is not available to the general public. Not all licensed agents subscribe to the MLS. MLS does not include all new homes available or listings from non-MLS agents, nor does it include properties for sale by owner. The territorial jurisdiction of the GLVAR as a member of the National Association of REALTORS® includes Clark, Nye, White Pine and Lincoln Counties, Nevada, and such other areas as from time to time may be allocated to the GLVAR by the Board of Directors of the National Association of REALTORS®.



Source: Greater Las Vegas Association of REALTORS®

For media inquiries, please call George McCabe, B&P Public Relations, at (702) 325-7358.

DISCLAIMER: This data is based on information from the Greater Las Vegas Association of REALTORS® (GLVAR) Multiple Listing Service (MLS). This information is deemed reliable but is not guaranteed. MLS collects, compiles and distributes information about homes listed for sale by its subscribers who are real estate agents. MLS subscription is available to all real estate agents licensed in Nevada, but is not available to the general public. Not all licensed agents subscribe to the MLS. MLS does not include all new homes available or listings from non-MLS agents, nor does it include properties for sale by owner. The territorial jurisdiction of the GLVAR as a member of the National Association of REALTORS® includes Clark, Nye, White Pine and Lincoln Counties, Nevada, and such other areas as from time to time may be allocated to the GLVAR by the Board of Directors of the National Association of REALTORS®.



Source: Greater Las Vegas Association of REALTORS®

For media inquiries, please call George McCabe, B&P Public Relations, at (702) 325-7358.

DISCLAIMER: This data is based on information from the Greater Las Vegas Association of REALTORS® (GLVAR) Multiple Listing Service (MLS). This information is deemed reliable but is not guaranteed. MLS collects, compiles and distributes information about homes listed for sale by its subscribers who are real estate agents. MLS subscription is available to all real estate agents licensed in Nevada, but is not available to the general public. Not all licensed agents subscribe to the MLS. MLS does not include all new homes available or listings from non-MLS agents, nor does it include properties for sale by owner. The territorial jurisdiction of the GLVAR as a member of the National Association of REALTORS® includes Clark, Nye, White Pine and Lincoln Counties, Nevada, and such other areas as from time to time may be allocated to the GLVAR by the Board of Directors of the National Association of REALTORS®.