



Greater Las Vegas Association of REALTORS® Aug 2019 Statistics

	Single Family Residential Units			Condo/Townhouse Units		
	Aug 19	Change from Jul 19	Change from Aug 18	Aug 19	Change from Jul 19	Change from Aug 18
AVAILABILITY AT END OF PERIOD						
# of available units listed	12,076	-1.3%	+23.1%	2,892	-2.0%	+37.6%
Median list price of available units	\$ 334,000	-0.2%	-0.3%	173,000	+0.0%	+2.4%
Average list price of available units	\$ 483,784	+0.2%	+0.7%	197,225	+1.2%	+2.7%
*AVAILABILITY AT END OF PERIOD						
# of available units listed w/o offers	7,766	-0.5%	+33.5%	1,860	-0.2%	+57.1%
Median list price of available units w/o offers	\$ 349,000	-0.3%	-4.4%	\$ 170,000	+0.4%	+1.8%
Average list price of available units w/o offers	\$ 541,613	-0.7%	-3.3%	\$ 201,134	+2.0%	+3.1%
NEW LISTINGS THIS PERIOD						
# of new listings	4,113	-0.2%	-4.3%	930	-0.4%	-12.7%
Median price of new listings	\$ 325,000	+0.0%	+2.3%	\$ 179,700	-0.2%	+5.7%
Average price of new listings	\$ 413,292	+2.2%	+2.6%	\$ 204,899	+4.2%	+9.9%
UNITS SOLD THIS PERIOD						
# of units sold	3,168	+0.3%	+3.1%	767	+5.9%	-5.1%
Median price of units sold	\$ 305,000	+0.7%	+3.4%	\$ 177,000	+1.1%	+4.1%
Average price of units sold	\$ 354,198	-1.4%	+1.3%	\$ 189,395	+3.3%	+4.5%
TIME ON MARKET FOR UNITS SOLD THIS PERIOD						
	Aug 19	Jul 19	Aug 18	Aug 19	Jul 19	Aug 18
0-30 days	52.4%	57.6%	71.8%	48.8%	54.1%	76.0%
31-60 days	22.2%	20.4%	15.7%	22.7%	20.2%	14.2%
61-90 days	11.8%	10.8%	5.8%	13.8%	11.6%	4.5%
91-120 days	5.6%	4.8%	3.2%	6.5%	5.5%	2.4%
121+ days	8.1%	6.3%	3.5%	8.2%	8.6%	3.0%
TOTAL HOME SALES DOLLAR VALUE FOR UNITS SOLD THIS PERIOD						
	Aug 19	Change from Jul 19	Change from Aug 18	Aug 19	Change from Jul 19	Change from Aug 18
	\$ 1,122,098,552	-1.1%	+4.5%	\$ 145,265,888	+9.4%	-0.8%

***This category reflects the existing market availability of listings without pending or contingent offers.**

Source: Greater Las Vegas Association of REALTORS®

For media inquiries, please call George McCabe, with B&P Public Relations, at (702) 325-7358.

DISCLAIMER: This data is based on information from the Greater Las Vegas Association of REALTORS® (GLVAR) Multiple Listing Service (MLS). This information is deemed reliable but is not guaranteed. MLS collects, compiles and distributes information about homes listed for sale by its subscribers who are real estate agents. MLS subscription is available to all real estate agents licensed in Nevada, but is not available to the general public. Not all licensed agents subscribe to the MLS. MLS does not include all new homes available or listings from non-MLS agents, nor does it include properties for sale by owner. The territorial jurisdiction of the GLVAR as a member of the National Association of REALTORS® includes Clark, Nye, Lincoln and White Pine Counties, Nevada, and such other areas as from time to time may be allocated to the GLVAR by the Board of Directors of the National Association of REALTORS®.



Greater Las Vegas Association of REALTORS® August 2019 Statistics

Sold Units Statistics by Area (see map)

Area	Single Family Residential Units			Condo/Townhouse Units		
	# of units sold	Median Sold Price	Average Sold Price	# of units sold	Median Sold Price	Average Sold Price
101 - North	47	\$215,000	\$212,127	7	\$105,000	\$97,857
102 - North	111	\$318,000	\$369,994	9	\$219,900	\$223,767
103 - North	374	\$288,000	\$297,145	35	\$205,000	\$205,133
201 - East	41	\$195,000	\$197,312	12	\$74,500	\$84,225
202 - East	59	\$220,000	\$221,061	15	\$103,000	\$102,600
203 - East	68	\$245,000	\$269,896	15	\$128,000	\$131,094
204 - East	117	\$249,000	\$272,059	31	\$135,000	\$152,927
301 - South	67	\$249,000	\$254,876	61	\$160,000	\$160,475
302 - South	67	\$262,000	\$266,601	49	\$142,000	\$145,472
303 - South	159	\$305,000	\$335,434	38	\$207,500	\$198,237
401 - North West	27	\$237,000	\$310,256	11	\$105,000	\$116,360
402 - North West	106	\$243,950	\$248,351	33	\$137,000	\$145,524
403 - North West	70	\$277,500	\$314,394	71	\$165,000	\$172,157
404 - North West	153	\$423,750	\$498,423	36	\$269,000	\$286,909
405 - North West	276	\$316,500	\$366,894	35	\$181,900	\$190,357
501 - South West	64	\$315,750	\$338,687	31	\$155,000	\$152,203
502 - South West	137	\$395,000	\$553,105	33	\$215,000	\$256,072
503 - South West	131	\$332,000	\$409,854	79	\$158,000	\$178,854
504 - South West	181	\$315,000	\$340,299	23	\$170,000	\$168,609
505 - South West	192	\$330,000	\$388,127	12	\$240,750	\$244,154
601 - Henderson	37	\$295,000	\$338,427	16	\$213,750	\$204,525
602 - Henderson	94	\$333,750	\$348,149	29	\$211,900	\$214,926
603 - Henderson	46	\$345,495	\$390,716	13	\$250,000	\$260,918
604 - Henderson	45	\$314,900	\$338,142	4	\$142,250	\$157,625
605 - Henderson	88	\$331,950	\$354,224	20	\$205,500	\$204,365
606 - Henderson	195	\$425,000	\$493,444	30	\$266,500	\$369,434
701 - Boulder City	20	\$325,250	\$359,470	6	\$168,000	\$181,833
702 - Boulder City	4	\$615,000	\$518,000	4	\$265,000	\$271,250
800 - Mesquite	1	\$263,000	\$263,000	5	\$165,000	\$172,040
801 - Muddy River (Moapa, Glendale, Logandale, Overton)	7	\$359,020	\$368,146	-	\$0	\$0
802 - Mt. Charleston/Lee Canyon	5	\$465,000	\$455,000	-	\$0	\$0
803 - Indian Springs/Cold Creek	3	\$515,000	\$505,333	-	\$0	\$0
804 - Mountain Springs	1	\$710,000	\$710,000	-	\$0	\$0
805 - Blue Diamond	2	\$962,000	\$962,000	-	\$0	\$0
806 - State Line/Jean/Goodsprings	-	\$0	\$0	-	\$0	\$0
807 - Sandy Valley	1	\$265,000	\$265,000	-	\$0	\$0
808 - Laughlin	1	\$285,000	\$285,000	3	\$98,000	\$142,833
809 - Other Clark County	-	\$0	\$0	-	\$0	\$0
810 - Pahrump	62	\$248,500	\$248,500	1	\$122,000	\$122,000
811 - Nye County	-	\$0	\$0	-	\$0	\$0
812 - Lincoln County	1	\$122,000	\$122,000	-	\$0	\$0
813 - Other Nevada	1	\$70,000	\$70,000	-	\$0	\$0
814 - Amargosa Valley	-	\$0	\$0	-	\$0	\$0
815 - Beatty	-	\$0	\$0	-	\$0	\$0
816 - White Pine County	15	\$120,000	\$121,633	-	\$0	\$0
817 - Searchlight	-	\$0	\$0	-	\$0	\$0
900 - Outside Nevada	5	\$295,000	\$358,000	-	\$0	\$0

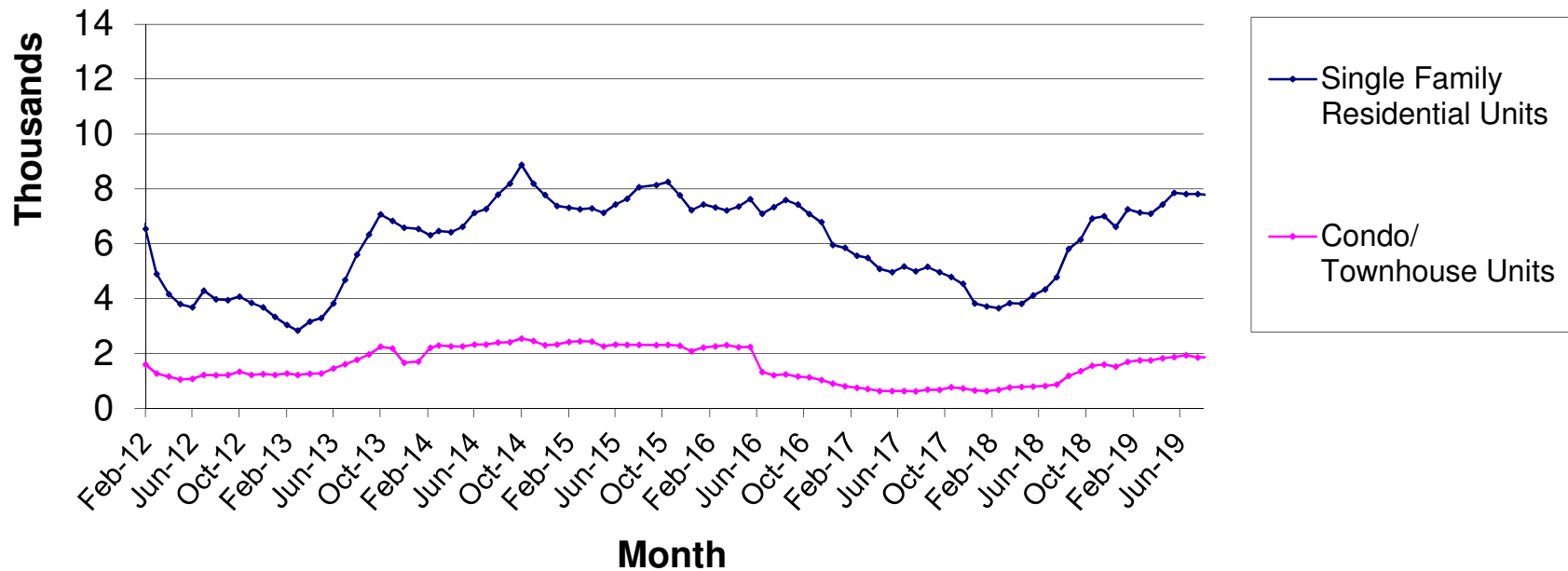
Source: Greater Las Vegas Association of REALTORS®

For media inquiries, please call George McCabe, B&P Public Relations, at (702) 325-7358.

DISCLAIMER: This data is based on information from the Greater Las Vegas Association of REALTORS® (GLVAR) Multiple Listing Service (MLS). This information is deemed reliable but is not guaranteed. MLS collects, compiles and distributes information about homes listed for sale by its subscribers who are real estate agents. MLS subscription is available to all real estate agents licensed in Nevada, but is not available to the general public. Not all licensed agents subscribe to the MLS. MLS does not include all new homes available or listings from non-MLS agents, nor does it include properties for sale by owner. The territorial jurisdiction of the GLVAR as a member of the National Association of REALTORS® includes Clark, Nye, Lincoln and White Pine Counties, Nevada, and such other areas as from time to time may be allocated to the GLVAR by the Board of Directors of the National Association of REALTORS®.



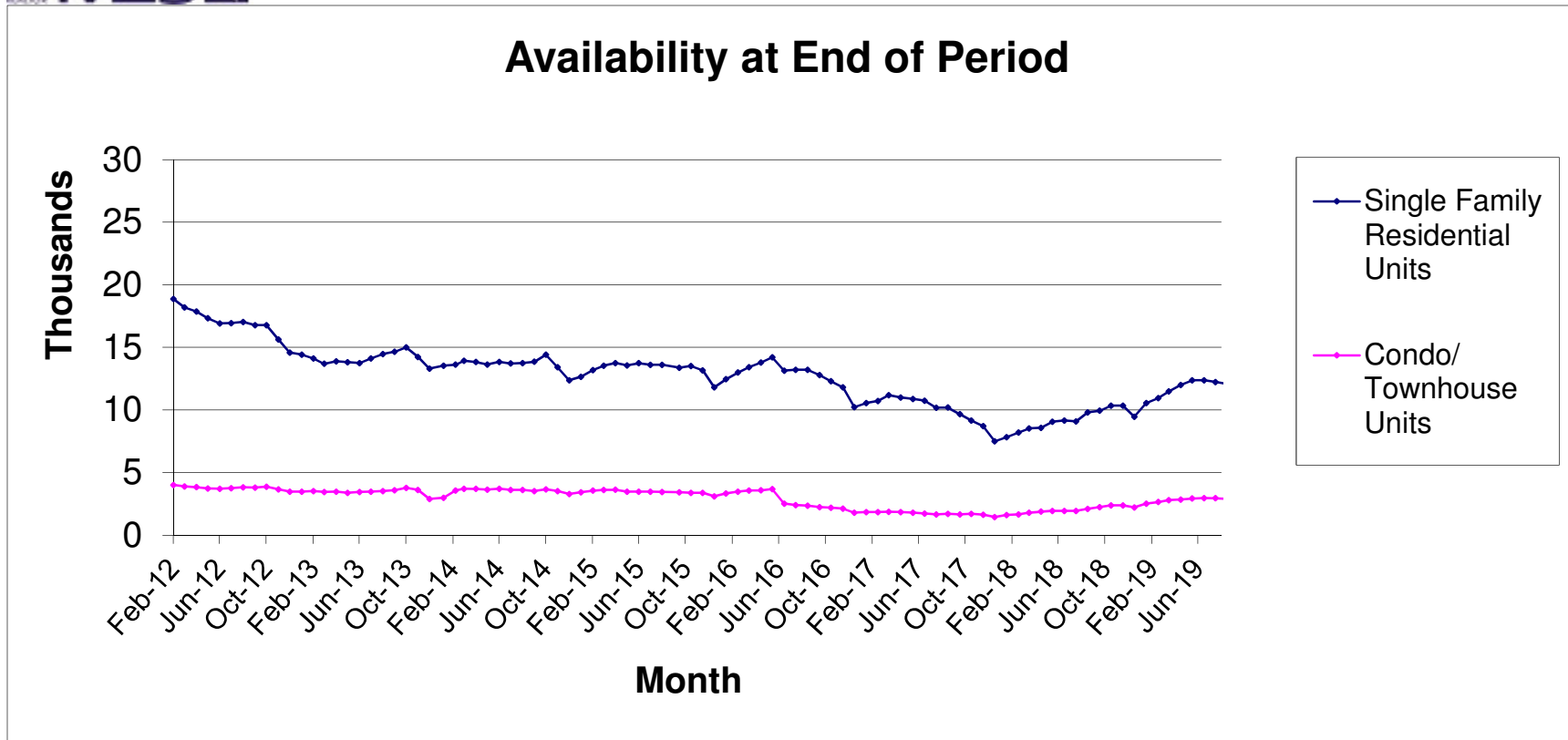
Availability Without Pending Or Contingent Offers End Of Period



Source: Greater Las Vegas Association of REALTORS®

For media inquires, please call George McCabe, B&P Public Relations, at (702) 325-7358.

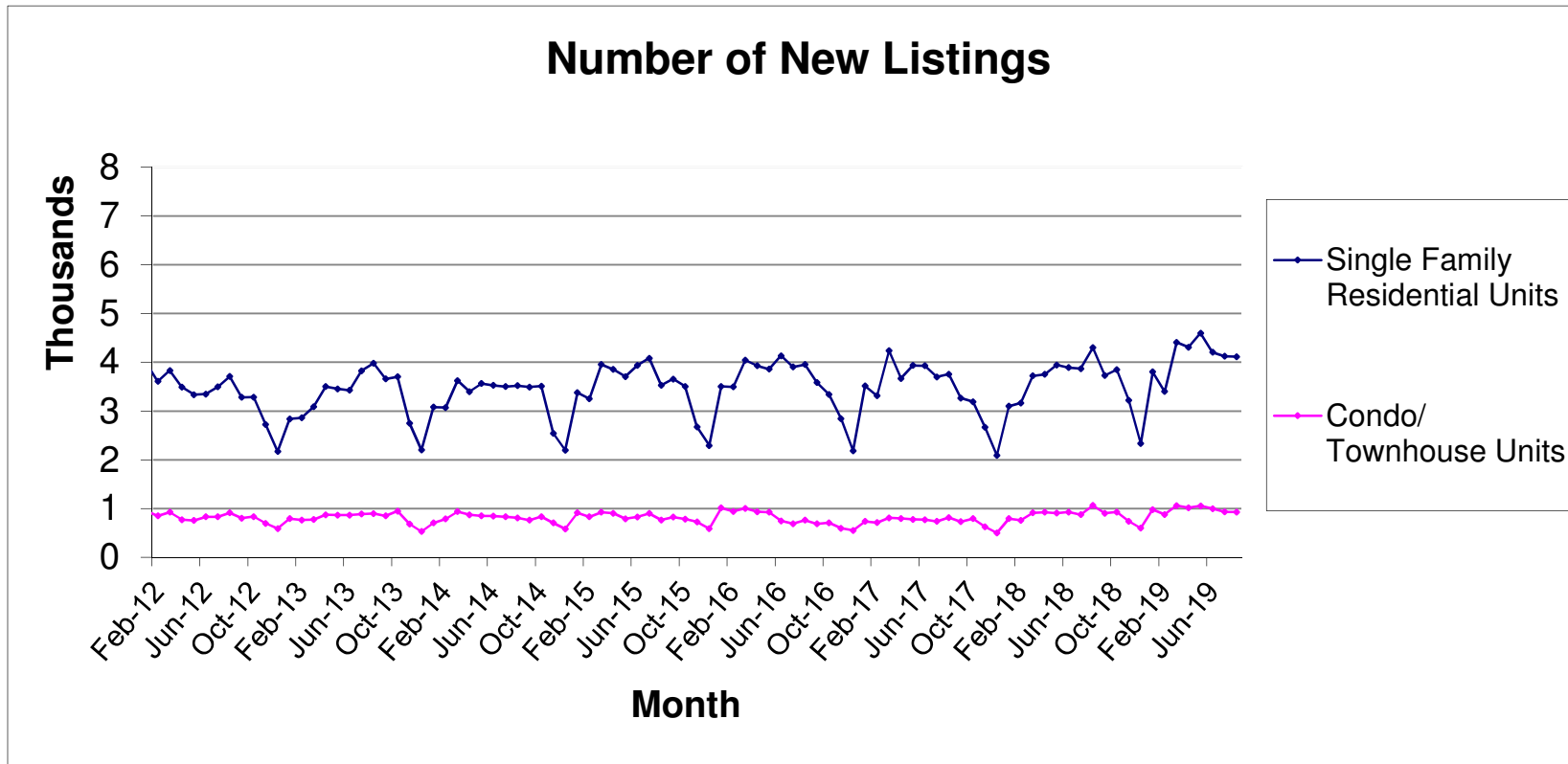
DISCLAIMER: This data is based on information from the Greater Las Vegas Association of REALTORS® (GLVAR) Multiple Listing Service (MLS). This information is deemed reliable but is not guaranteed. MLS collects, compiles and distributes information about homes listed for sale by its subscribers who are real estate agents. MLS subscription is available to all real estate agents licensed in Nevada, but is not available to the general public. Not all licensed agents subscribe to the MLS. MLS does not include all new homes available or listings from non-MLS agents, nor does it include properties for sale by owner. The territorial jurisdiction of the GLVAR as a member of the National Association of REALTORS® includes Clark, Nye, White Pine and Lincoln Counties, Nevada, and such other areas as from time to time may be allocated to the GLVAR by the Board of Directors of the National Association of REALTORS®.



Source: Greater Las Vegas Association of REALTORS®

For media inquires, please call George McCabe, B&P Public Relations, at (702) 325-7358.

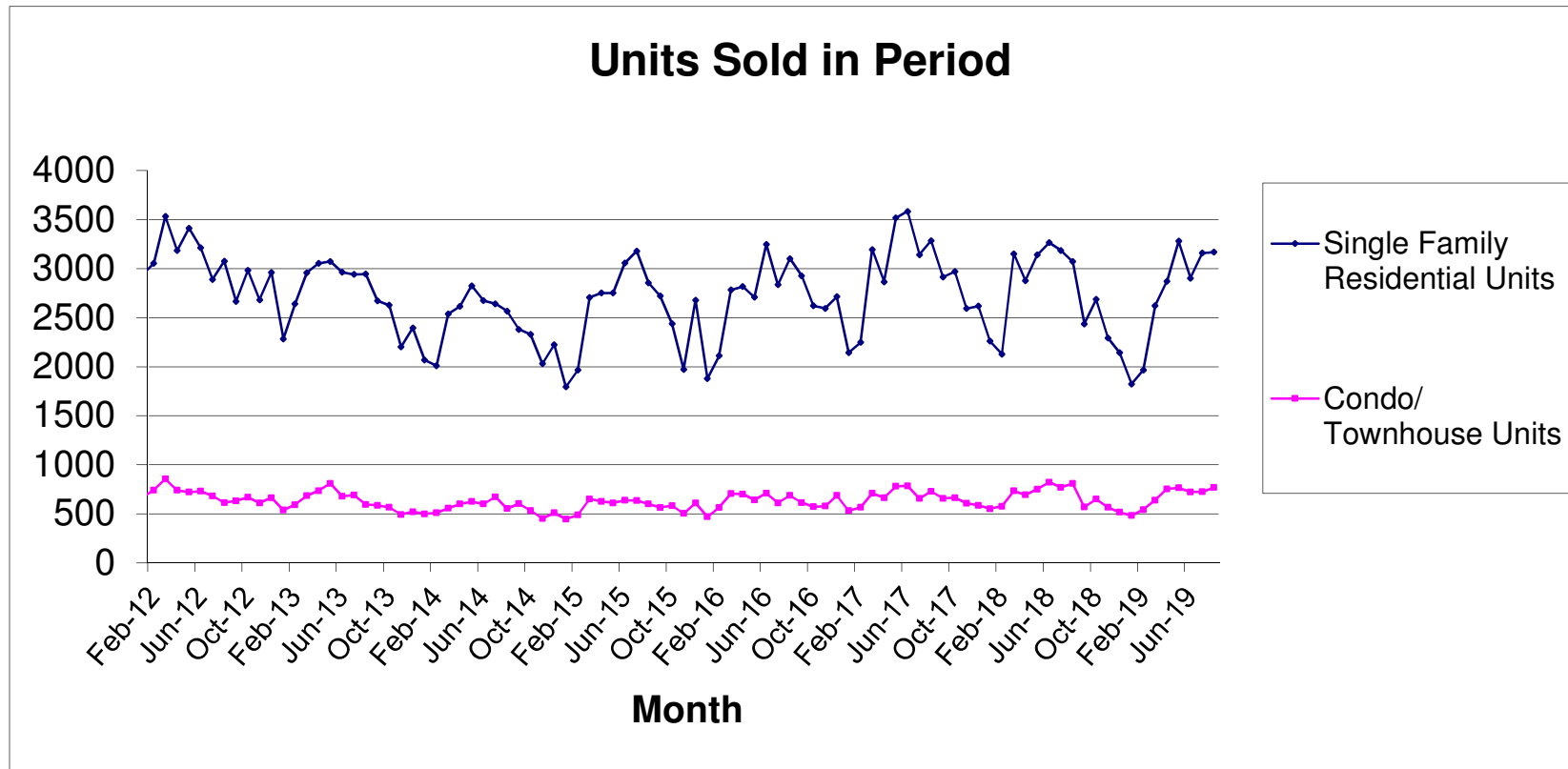
DISCLAIMER: This data is based on information from the Greater Las Vegas Association of REALTORS® (GLVAR) Multiple Listing Service (MLS). This information is deemed reliable but is not guaranteed. MLS collects, compiles and distributes information about homes listed for sale by its subscribers who are real estate agents. MLS subscription is available to all real estate agents licensed in Nevada, but is not available to the general public. Not all licensed agents subscribe to the MLS. MLS does not include all new homes available or listings from non-MLS agents, nor does it include properties for sale by owner. The territorial jurisdiction of the GLVAR as a member of the National Association of REALTORS® includes Clark, Nye, White Pine and Lincoln Counties, Nevada, and such other areas as from time to time may be allocated to the GLVAR by the Board of Directors of the National Association of REALTORS®.



Source: Greater Las Vegas Association of REALTORS®

For media inquiries, please call George McCabe, B&P Public Relations, at (702) 325-7358.

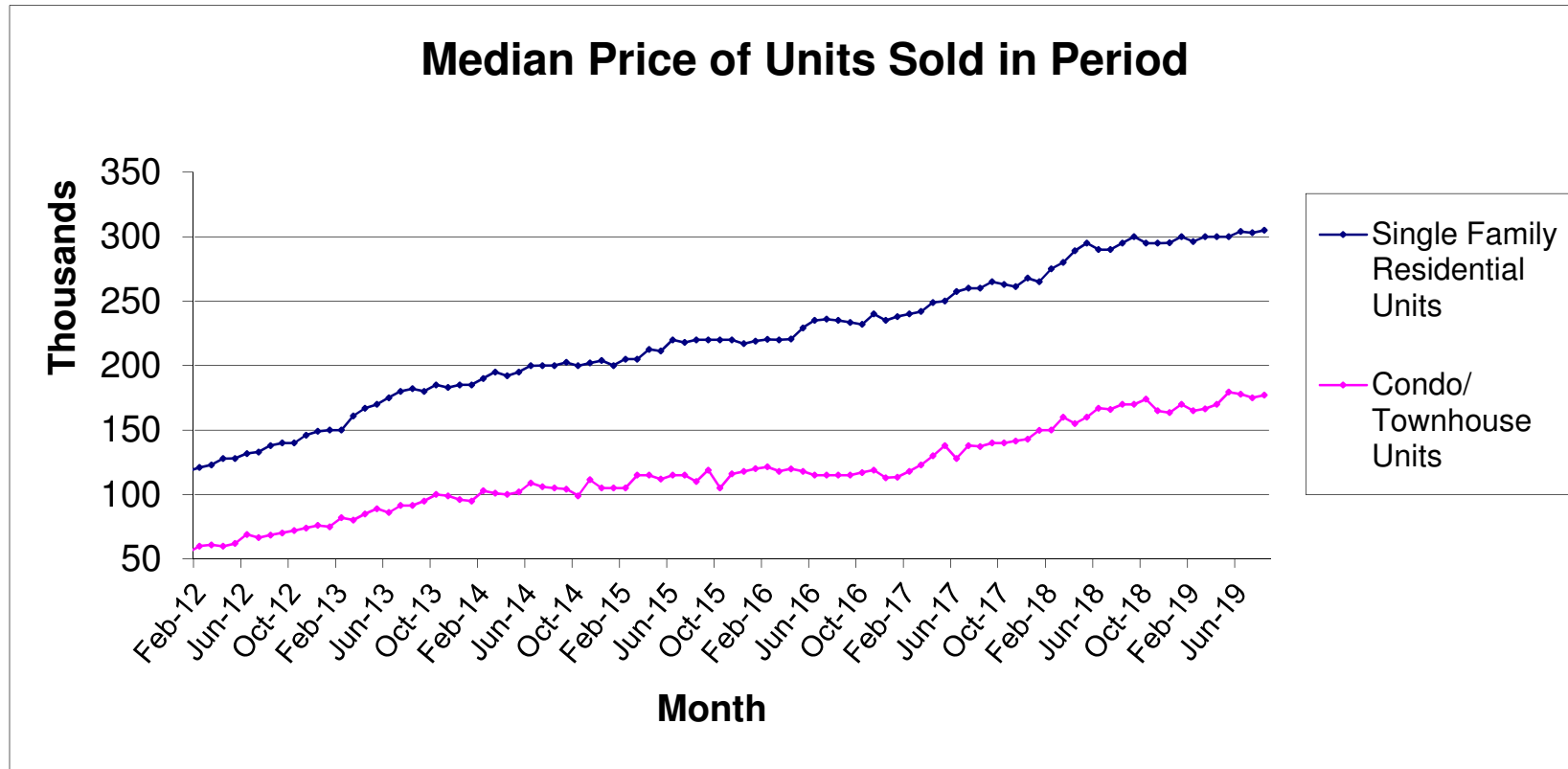
DISCLAIMER: This data is based on information from the Greater Las Vegas Association of REALTORS® (GLVAR) Multiple Listing Service (MLS). This information is deemed reliable but is not guaranteed. MLS collects, compiles and distributes information about homes listed for sale by its subscribers who are real estate agents. MLS subscription is available to all real estate agents licensed in Nevada, but is not available to the general public. Not all licensed agents subscribe to the MLS. MLS does not include all new homes available or listings from non-MLS agents, nor does it include properties for sale by owner. The territorial jurisdiction of the GLVAR as a member of the National Association of REALTORS® includes Clark, Nye, White Pine and Lincoln Counties, Nevada, and such other areas as from time to time may be allocated to the GLVAR by the Board of Directors of the National Association of REALTORS®.



Source: Greater Las Vegas Association of REALTORS®

For media inquires, please call George McCabe, B&P Public Relations, at (702) 325-7358.

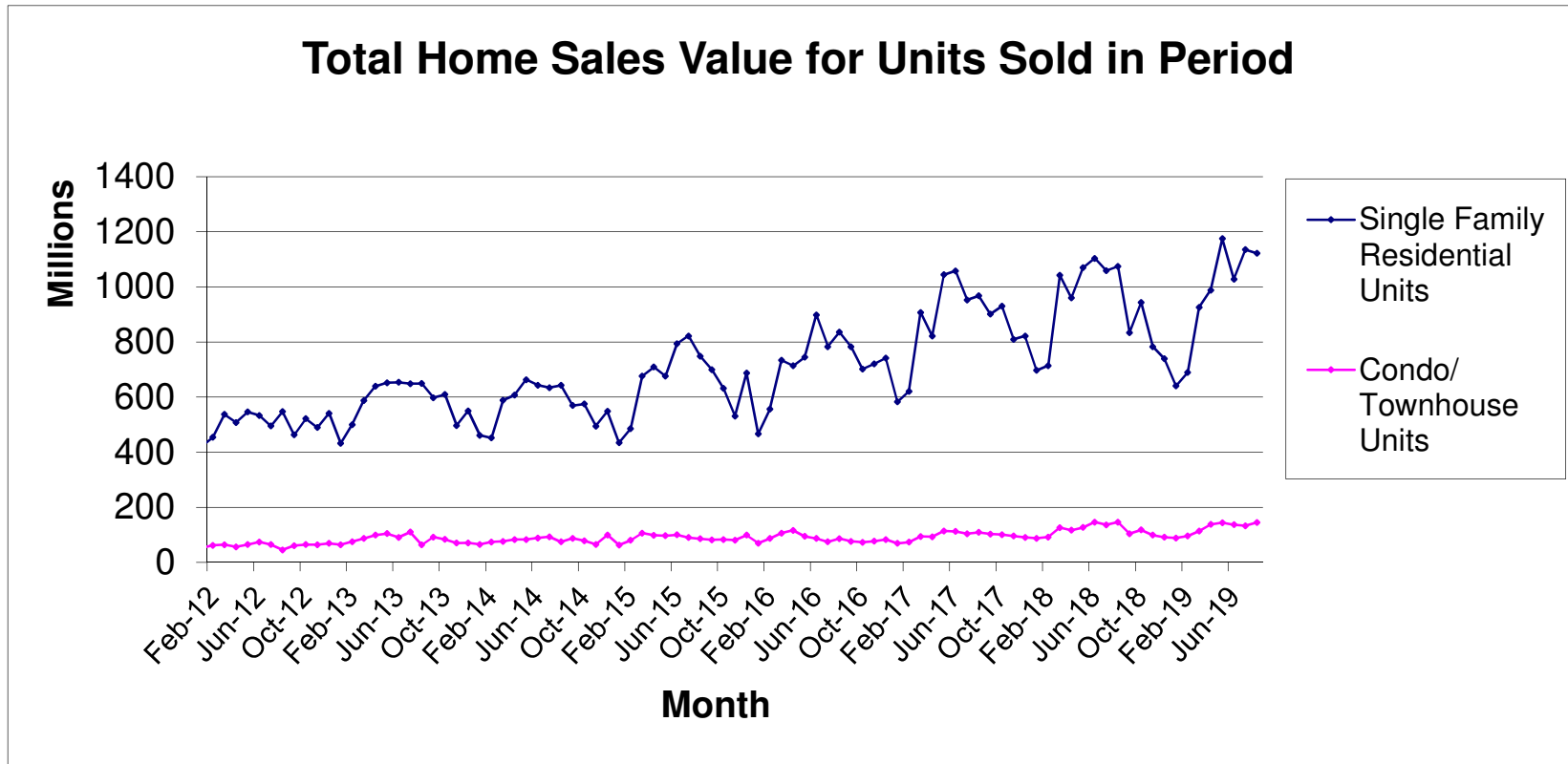
DISCLAIMER: This data is based on information from the Greater Las Vegas Association of REALTORS® (GLVAR) Multiple Listing Service (MLS). This information is deemed reliable but is not guaranteed. MLS collects, compiles and distributes information about homes listed for sale by its subscribers who are real estate agents. MLS subscription is available to all real estate agents licensed in Nevada, but is not available to the general public. Not all licensed agents subscribe to the MLS. MLS does not include all new homes available or listings from non-MLS agents, nor does it include properties for sale by owner. The territorial jurisdiction of the GLVAR as a member of the National Association of REALTORS® includes Clark, Nye, White Pine and Lincoln Counties, Nevada, and such other areas as from time to time may be allocated to the GLVAR by the Board of Directors of the National Association of REALTORS®.



Source: Greater Las Vegas Association of REALTORS®

For media inquires, please call George McCabe, B&P Public Relations, at (702) 325-7358.

DISCLAIMER: This data is based on information from the Greater Las Vegas Association of REALTORS® (GLVAR) Multiple Listing Service (MLS). This information is deemed reliable but is not guaranteed. MLS collects, compiles and distributes information about homes listed for sale by its subscribers who are real estate agents. MLS subscription is available to all real estate agents licensed in Nevada, but is not available to the general public. Not all licensed agents subscribe to the MLS. MLS does not include all new homes available or listings from non-MLS agents, nor does it include properties for sale by owner. The territorial jurisdiction of the GLVAR as a member of the National Association of REALTORS® includes Clark, Nye, White Pine and Lincoln Counties, Nevada, and such other areas as from time to time may be allocated to the GLVAR by the Board of Directors of the National Association of REALTORS®.



Source: Greater Las Vegas Association of REALTORS®

For media inquiries, please call George McCabe, B&P Public Relations, at (702) 325-7358.

DISCLAIMER: This data is based on information from the Greater Las Vegas Association of REALTORS® (GLVAR) Multiple Listing Service (MLS). This information is deemed reliable but is not guaranteed. MLS collects, compiles and distributes information about homes listed for sale by its subscribers who are real estate agents. MLS subscription is available to all real estate agents licensed in Nevada, but is not available to the general public. Not all licensed agents subscribe to the MLS. MLS does not include all new homes available or listings from non-MLS agents, nor does it include properties for sale by owner. The territorial jurisdiction of the GLVAR as a member of the National Association of REALTORS® includes Clark, Nye, White Pine and Lincoln Counties, Nevada, and such other areas as from time to time may be allocated to the GLVAR by the Board of Directors of the National Association of REALTORS®.